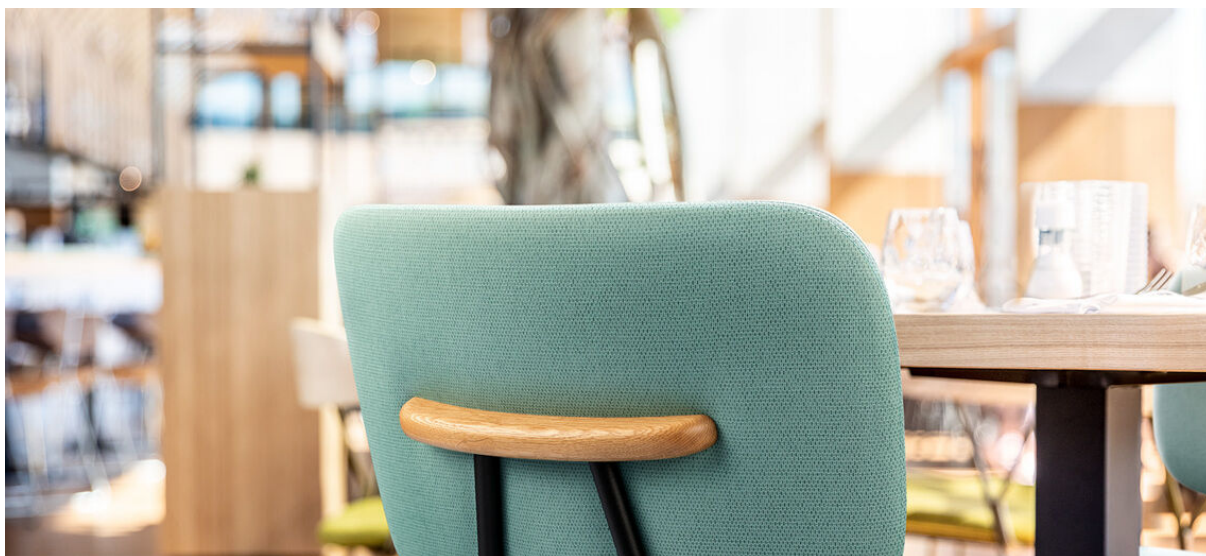


arrow

7055.01 - 7055.23



colección

**upholstery
vinyl**

descripción

**estructura de tela bicolor de alegres colores
claros**

composición

**espuma de vinilo, soporte de
algodón/poliéster**

ancho

± 137-140 cm, ± 54-55 inches

peso

**backing: ± 110 gr/m², ± 5 oz/yd¹
coating: ± 690 gr/m², ± 31 oz/yd¹**

espesor

1.1 mm, 0.04 inches

combustión retardada

**EN 1021/1-2
BS 5852, crib 5
NF P 92/503 - 507, M2
NF D60-013 (AM 18)
DIN 4102, B2
UNI 9175, classe 1 IM
Cal TB 117
NFPA 260, class 1
IMO 2010 FTP part 8**

resistencia al desgaste

ISO 12947-2

> 300.000 rubs martindale

ASTM D4157

100.000 double rubs wyzenbeek

resistencia al frotamiento

ISO 105-X12

wet 5 / dry 5 (scale 1-5)

AATCC 8

wet 5 / dry 5 (scale 1-5)

insensibilidad a la luz

ISO 105-B02

7 (scale 1-8)

ASTM D4329: 150 hours

4 (scale 1-5)

resistencia a la sangre, orina, sudor y grasa de la piel

EN 12720

5 (scale 1-5)

resistencia a la tensión

ISO 1421

length 470 N / width 313 N

ASTM D2261

length 7.3 lbs / width 9.2 lbs

flexibles

ISO 7854

400.000 cycles

adhesión al revestimiento

ASTM D751

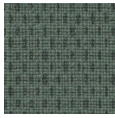
length 8.3 lbf / width 5.2 lbf



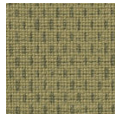
vinyl 
COMMITTED TO
SUSTAINABLE DEVELOPMENT

arrow

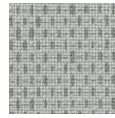
7055.01 - 7055.23



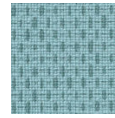
7055.01



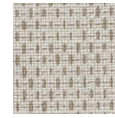
7055.02



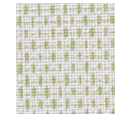
7055.03



7055.04



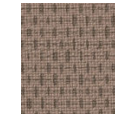
7055.05



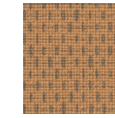
7055.06



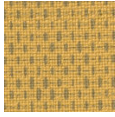
7055.07



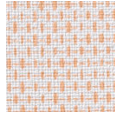
7055.08



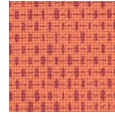
7055.09



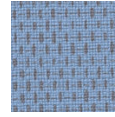
7055.10



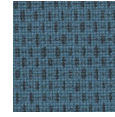
7055.11



7055.12



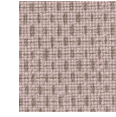
7055.13



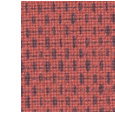
7055.14



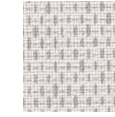
7055.15



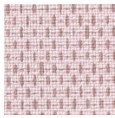
7055.16



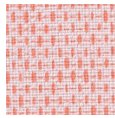
7055.17



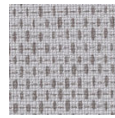
7055.18



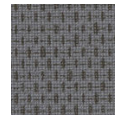
7055.19



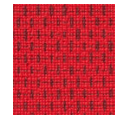
7055.20



7055.21



7055.22



7055.23