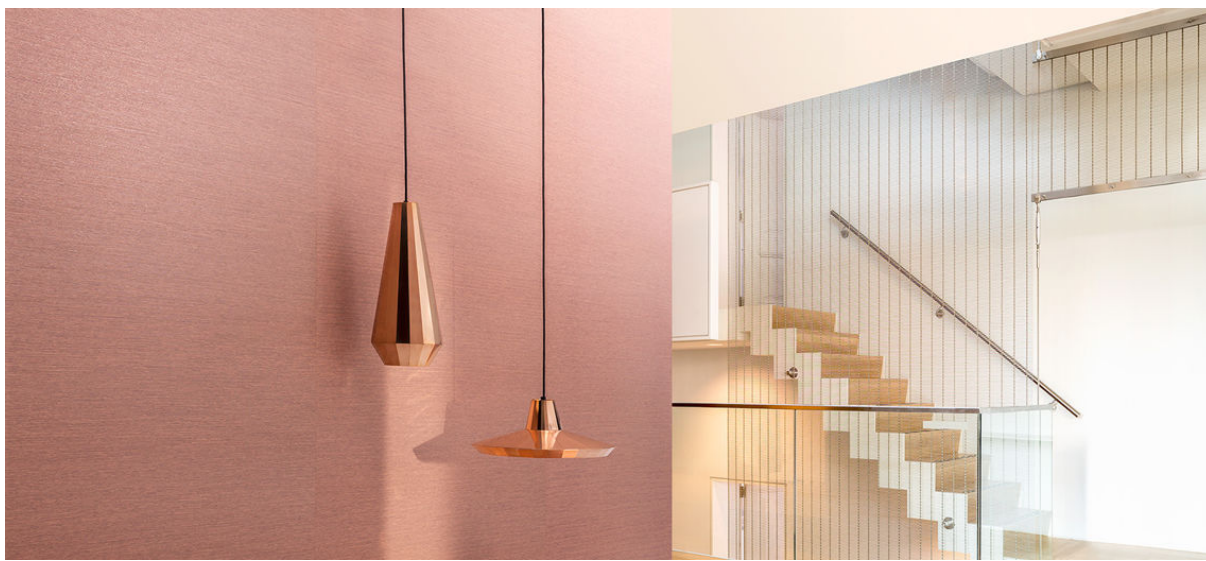


sazan

2005.01 - 2005.11



colección
wallcovering
04
textile

descripción
efecto tejido horizontal en 2 colores

composición
100% polietileno sobre un soporte de papel crepé

ancho
± 130 cm, ± 51 inches

peso
± 320 gr/m², ± 13 oz/yd¹

combustión retardada
EN 13501, B s1 d0

CE EN 15102:2007+A1:2011
 12
 1104/305-2011 (18-11-2015)
 wallcovering

REACTION TO FIRE: EN 13501-1

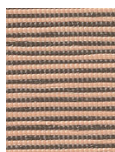


sazan

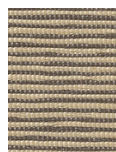
2005.01 - 2005.11



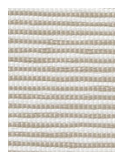
2005.01



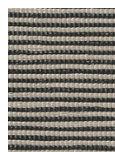
2005.05



2005.04



2005.06



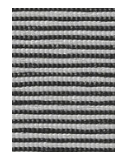
2005.08



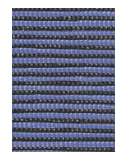
2005.09



2005.07



2005.11



2005.10



2005.02



2005.03