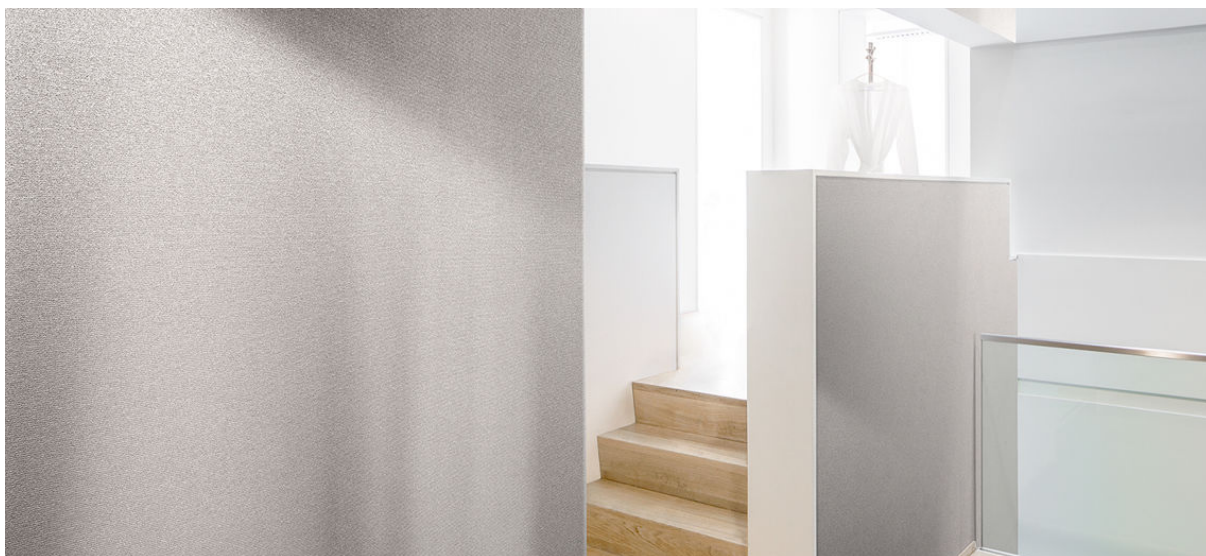


djerba

2006.01 - 2006.14



colección
wallcovering
04
textile

descripción
nervio ancho con efecto metalizado

composición
50% poliéster / 50% olefina sobre un soporte de papel

ancho
± 130 cm, ± 51 inches

peso
± 325 gr/m², ± 14 oz/yd¹

combustión retardada
EN 13501, D s2 d0

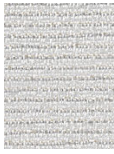
CE EN 15102:2007+A1:2011
 12
 1104/305-2011 (18-11-2015)
 wallcovering

REACTION TO FIRE: EN 13501-1

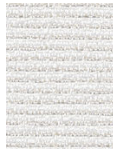


djerba

2006.01 - 2006.14



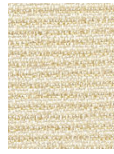
2006.01



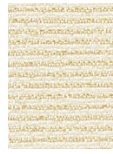
2006.02



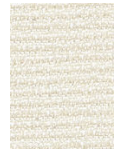
2006.08



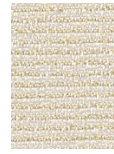
2006.06



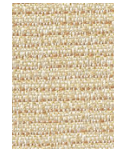
2006.11



2006.03



2006.12



2006.14



2006.13



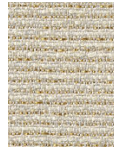
2006.04



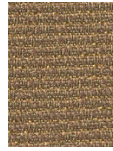
2006.05



2006.07



2006.09



2006.10