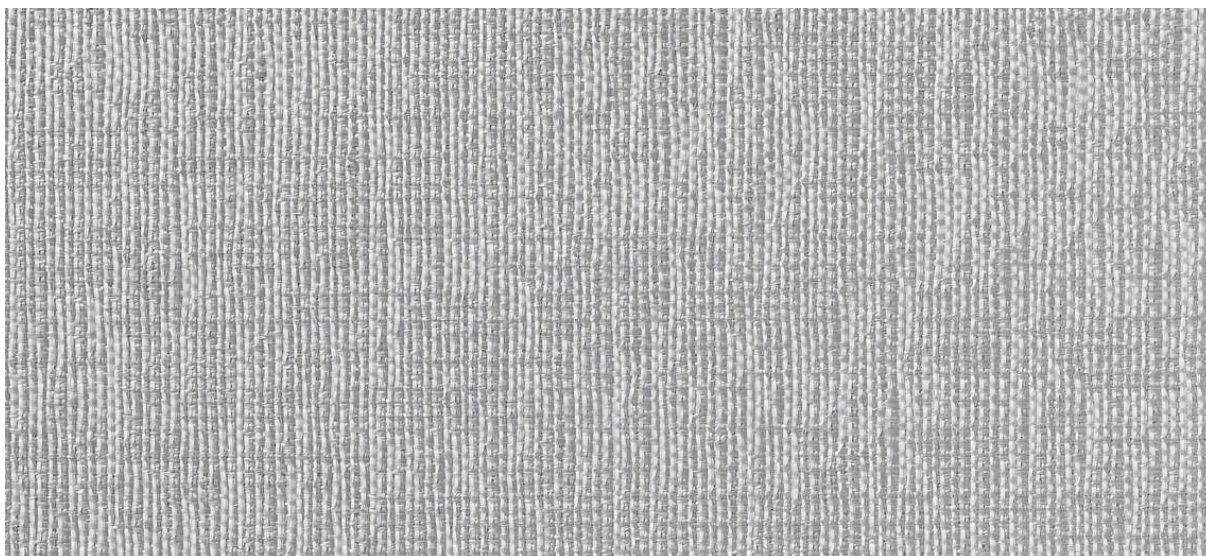


linen

2547.01 - 2547.10



colección

wallcovering

05

textile

xorel

descripción

estructura integral de lino

composición

100% ifr xorel® en x-protect wall™
(respaldo en papel)

ancho

± 132 cm, ± 52 inches

peso

± 388 gr/m², ± 17 oz/yd¹

combustión retardada

EN 13501, B s1 d0

ASTM E84, A

información adicional

cradle to cradle gold certified



REACTION TO FIRE: EN 13501-1



facts^{CM}
silver

Xorel is a registered trademark and license to distribute is granted by permission of Carnegie Fabrics Inc. US

linen

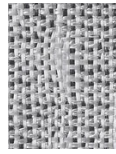
2547.01 - 2547.10



2547.01



2547.02



2547.03



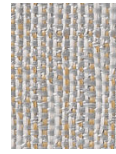
2547.04



2547.05



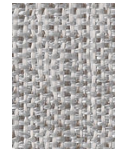
2547.06



2547.07



2547.08



2547.09



2547.10