

kilby

1113.01 - 1113.33



colección
wallcovering
vinyl

permeabilidad al vapor de agua
ISO 15106-3 / EN ISO 12572
Sd value \pm 9 m

descripción
estructura de tejido de lino bicolor, no
direccional, con aspecto mate

composición
capa vinílica estampada con tintas al agua,
sobre soporte de algodón

ancho
 \pm 130 cm, \pm 51 inches

peso
 \pm 350 gr/m², \pm 15 oz/yd¹

absorción del ruido

ISO 354

alphaw 0.10

ASTM C423

nrc 0.10

combustión retardada

EN 13501, B s1 d0

IMO 2010 FTP part 2-5

ASTM E84, A

NFPA 286

insensibilidad a la luz

ISO 105-B02

8 (escala 1-8)

CCC-W-408D

type II



vinyl 
COMMITTED TO
SUSTAINABLE DEVELOPMENT

CE EN 15102



kilby

1113.01 - 1113.33



1113.01



1113.02



1113.03



1113.04



1113.05



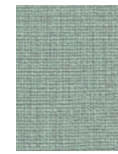
1113.06



1113.07



1113.08



1113.09



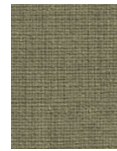
1113.10



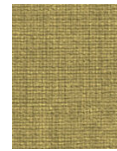
1113.11



1113.12



1113.13



1113.14



1113.15



1113.16



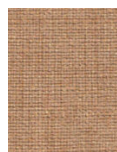
1113.17



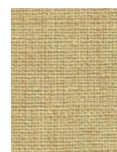
1113.18



1113.19



1113.20



1113.21



1113.22



1113.23



1113.24



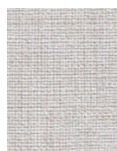
1113.25



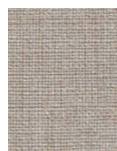
1113.26



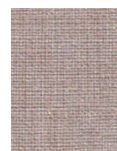
1113.27



1113.28



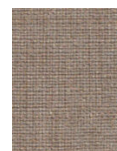
1113.29



1113.30



1113.31



1113.32



1113.33