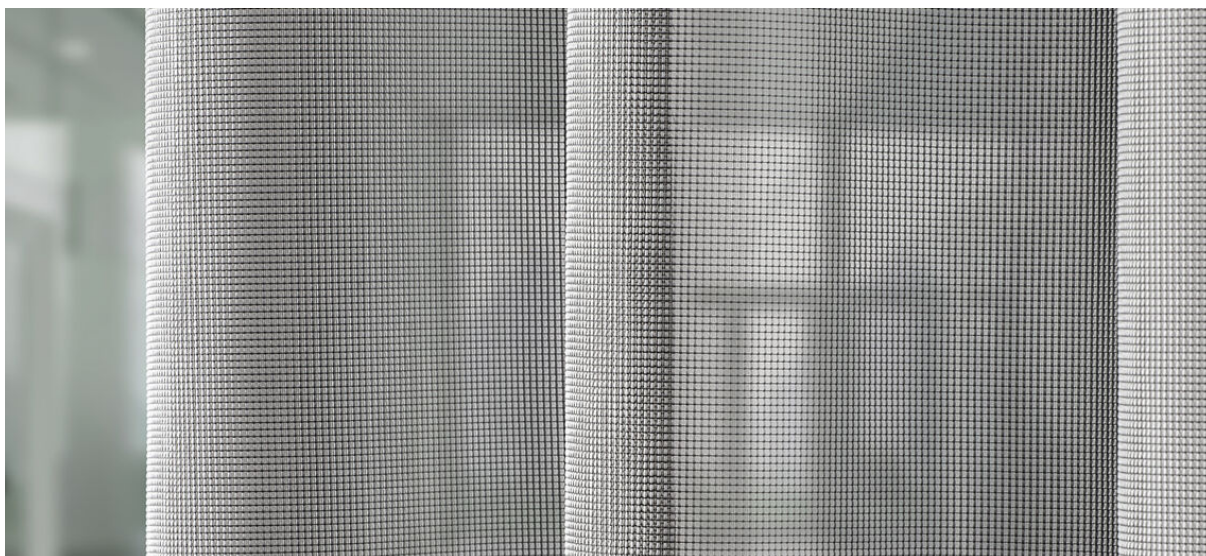


# nora

8032.01 - 8032.14



binder

curtain

**03**

sheer/transparent

description

**transparent sportif dans des couleurs non altérables**

composition

**100% polyester ignifuge**

largeur

**± 295 cm, ± 116 inches**

poids

**± 271 gr/m<sup>1</sup>, ± 9 oz/yd<sup>1</sup> fabrics**

non feu

**EN 13773, class 1**

**BS 5867-2, type C**

**NF P 92/503-507, M1**

**DIN 4102, B1**

**UNI VF 8456-8457, classe 1**

**IMO 2010 FTP part 7**

**NFPA 701**

**CAN ULC S109**

résistance au frottement

**ISO 105-X12**

humide 4-5 / sèche 4-5 (échelle 1-5)

**AATCC 8**

humide 5 / sèche 5 (échelle 1-5)

solidité lumière

**ISO 105-B02**

light 6 / dark 6-7 (scale 1-8)

**AATCC 16.3: 60 hours**

4-5 (échelle 1-5)

entretien





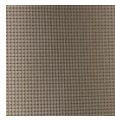
# nora

8032.01 - 8032.14

---



8032.04



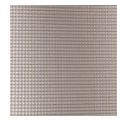
8032.10



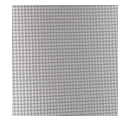
8032.07



8032.03



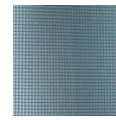
8032.05



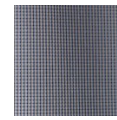
8032.02



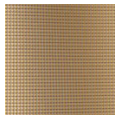
8032.12



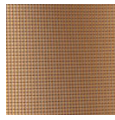
8032.14



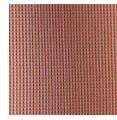
8032.13



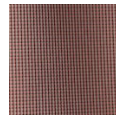
8032.01



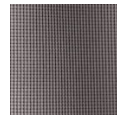
8032.06



8032.09



8032.08



8032.11