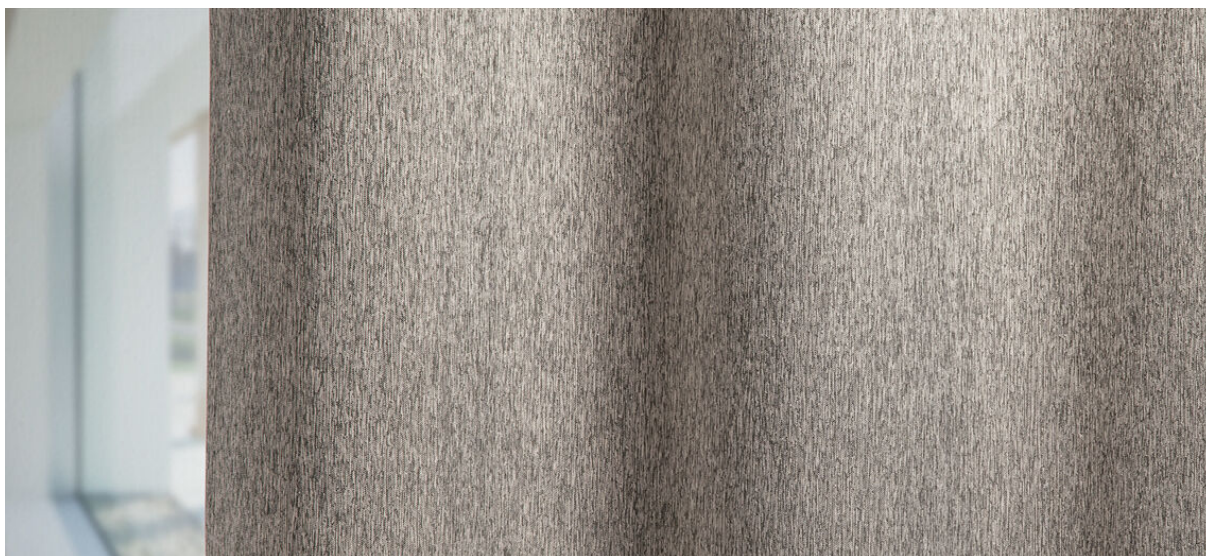


# iseo

8043.01 - 8043.18



binder

**curtain 02**

description

**dim out souple ton sur ton avec dos satiné**

composition

**100% polyester ignifuge**

largeur

**± 300 cm, ± 118 inches**

poids

**± 1030 gr/m<sup>1</sup>, ± 33 oz/yd<sup>1</sup> fabrics**

absorption acoustique

**ISO 354, alphaw 0.7**

confort visuel & thermique

**EN 410/EN 14501**

**AATCC 148**

non feu

**EN 13773, classe 1**

**BS 5867 part 2, type C**

**NF P 92-503-507, M1**

**DIN 4102 part 1, B1**

**NFPA 701**

**CAN ULC S109**

**NFPA 260, classe 1**

résistance au frottement

**ISO 105 X12**

humide 4-5 / sèche 4-5 (échelle 1-5)

**AATCC 8**

humide 4.5 / sèche 4.5 (échelle 1-5)

solidité lumière

**ISO 105-B02**

light 4 / dark 5-7 (échelle 1-8)

**AATCC 16.3: 60 hours**

4 (échelle 1-5)

résistance au glissement à la couture

**ASTM D434**

warp 52 lbs / weft 57 lbs

entretien



**rétrécissement: chaîne: -1.7% / trame:**

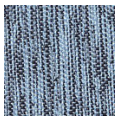
**-1.2%**



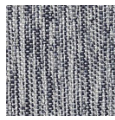
# iseo

8043.01 - 8043.18

---



8043.18



8043.17



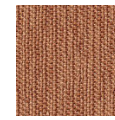
8043.13



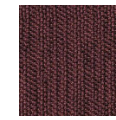
8043.11



8043.07



8043.09



8043.06



8043.04



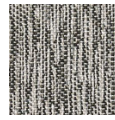
8043.03



8043.15



8043.16



8043.14



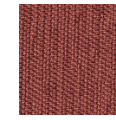
8043.12



8043.10



8043.05



8043.08



8043.01



8043.02