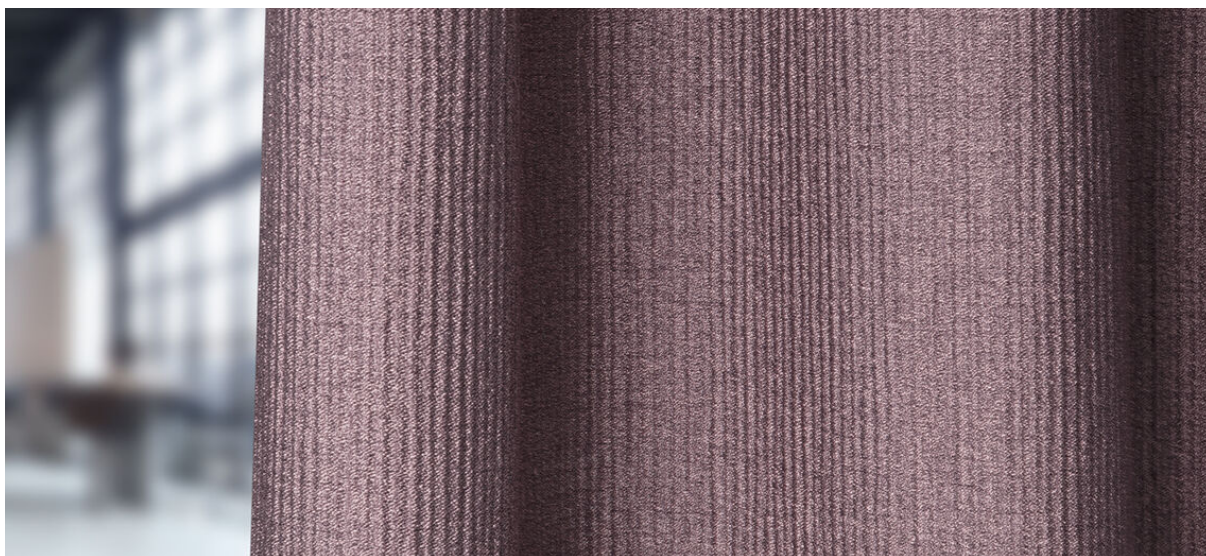


coron

8049.01 - 8049.20



binder

curtain 01

description

structure longitudinale tissée

composition

100% polyester ignifuge

largeur

± 157 cm, ± 62 inches

poids

± 297 gr/m¹, ± 10 oz/yd¹ fabrics

confort visuel & thermique

EN 410/EN 14501

non feu

EN 13773, class 1

BS 5867-2, type C

NF P 92/503-507, M1

DIN 4102, B1

UNI VF 8456-8457, classe 1

IMO 2010 FTP part 7

NFPA 701:2010-1

CAN ULC S109

résistance au frottement

ISO 105-X12

humide 4-5 / sèche 4-5 (échelle 1-5)

AATCC 8

humide 5 / sèche 5 (échelle 1-5)

solidité lumière

ISO 105-B02

6 (échelle 1-8)

AATCC 16.3: 60 hrs

5 (échelle 1-5)

résistance au glissement à la couture

ISO 13936-2

chaîne 4 mm / trame 3.7 mm

ASTM D434

chaîne 29 lbs / trame 28 lbs

entretien



**rétrécissement: chaîne -0.7% / trame
-0.5%**



**rétrécissement: chaîne -1.8% / trame
-1.6%**



**CONFIDENCE
IN TEXTILES**
Tested for harmful substances
according to Oeko-Tex® Standard 100



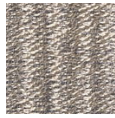
Standard 100
Oeko-Tex®
www.oeko-tex.com

coron

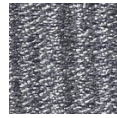
8049.01 - 8049.20



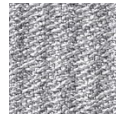
8049.01



8049.02



8049.03



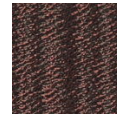
8049.04



8049.05



8049.06



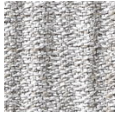
8049.07



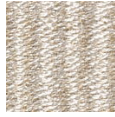
8049.08



8049.09



8049.10



8049.11



8049.12



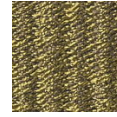
8049.13



8049.14



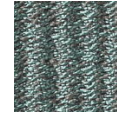
8049.15



8049.16



8049.17



8049.18



8049.19



8049.20