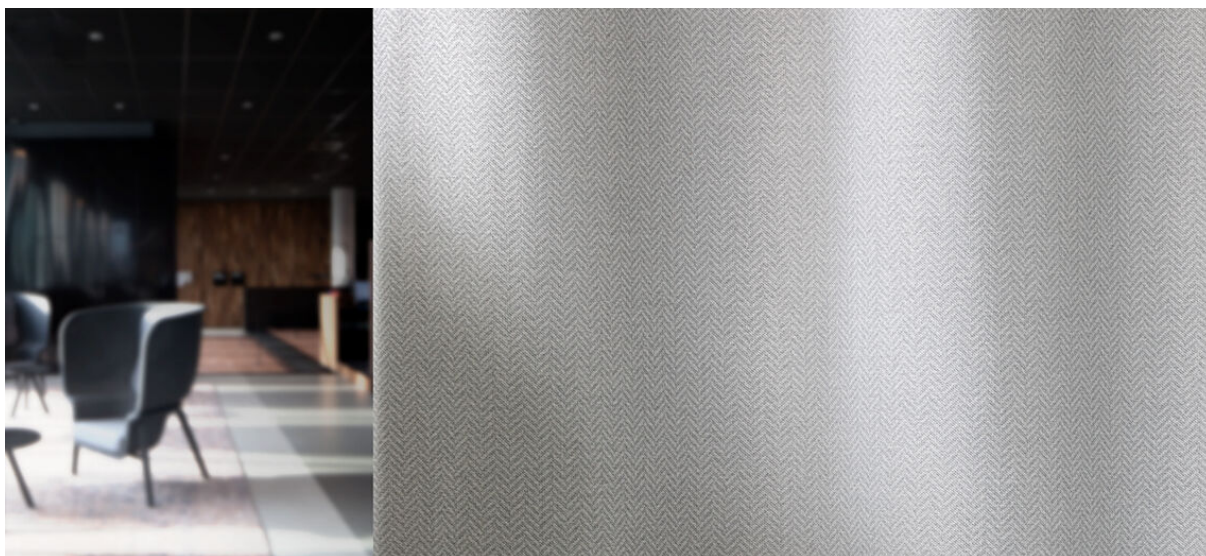


# koro

8068.01 - 8068.12



binder

**curtain 02**

description

**rideau à structure en chevrons, dim-out**

composition

**100% polyester ignifuge**

largeur

**± 294 cm, ± 116 inches**

poids

**± 861 gr/m<sup>1</sup>, ± 28 oz/yd<sup>1</sup> fabrics**

confort visuel & thermique

**EN 410/EN 14501**

**AATCC 148**

non feu

**EN 13773, class 1**

**BS 5867 - 2, type C**

**NF P 92 / 503 - 507, M1**

**DIN 4102, B1**

**UNI VF 8456 - 8457, classe 1**

**NFPA 701**

**CAN / ULC S109**

**IMO 2010 FTP part 7**

résistance au frottement

**ISO 105-X12**

humide 4-5 / sèche 4-5 (échelle 1-5)

**AATCC 8**

humide 5 / sèche 5 (échelle 1-5)

solidité lumière

**ISO 105-B02**

5 (scale 1-8)

**AATCC 16.3: 60 hours**

2.5 (échelle 1-5)

résistance au glissement à la couture

**ASTM D434**

53.5 lbs warp / 48 lbs weft

entretien



**rétrécissement: chaîne -0.8% / trame**

**-0.4%**



**rétrécissement: chaîne -1.6% / trame**

**-0.7%**



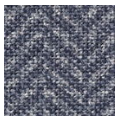
**CONFIDENCE  
IN TEXTILES**  
Tested for harmful substances  
according to Oeko-Tex® Standard 100



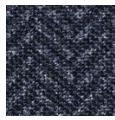
# koro

8068.01 - 8068.12

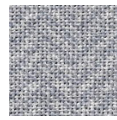
---



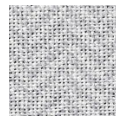
8068.01



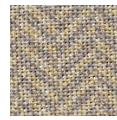
8068.02



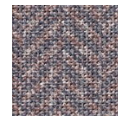
8068.03



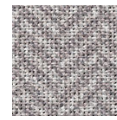
8068.04



8068.05



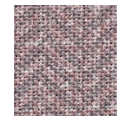
8068.06



8068.07



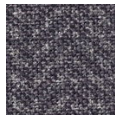
8068.08



8068.09



8068.10



8068.11



8068.12