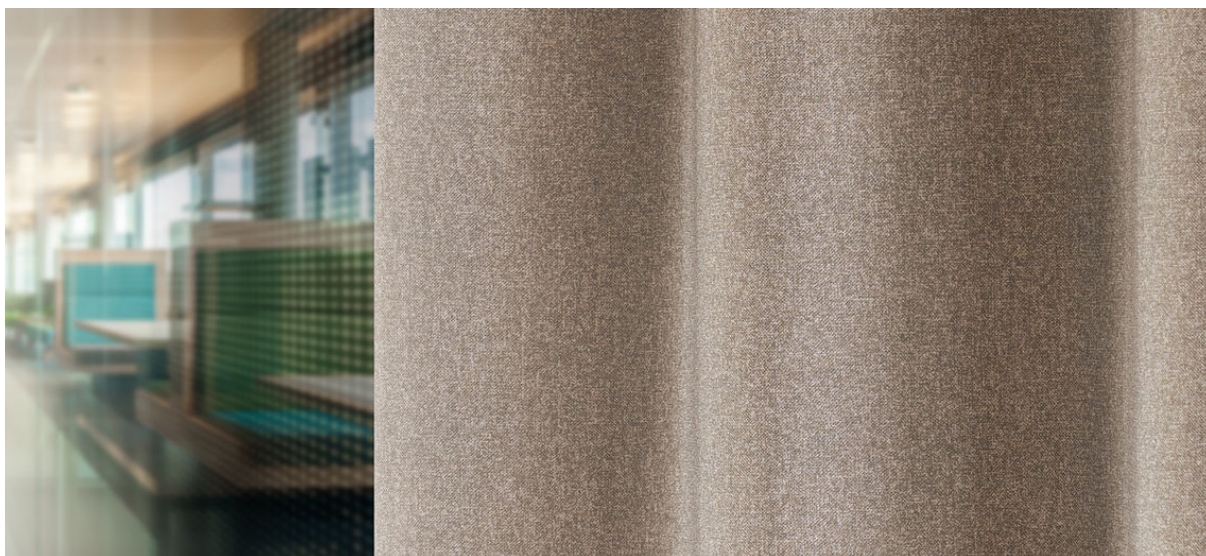


elba

8069.01 - 8069.20

black
out

binder
curtain 02

description
rideau à structure mélangée, black-out

composition
100% flame retardant polyester acrylic coating

largeur
± 277 cm, ± 109 inches

poids
± 1075 gr/m¹, ± 35 oz/yd¹ fabrics

confort thermique & visuel

EN 14501
class 4 (échelle 1-4)
AATCC 148
100% light blocked

non feu

EN 13773, class 1
BS 5867-2, type B
DIN 4102, B1
UNI VF 8456-8457, classe 1
NFPA 701
CAN/ULC S109
IMO 2010 FTP part 7

résistance au frottement

ISO 105-X12
humide 4-5 / sèche 4-5 (échelle 1-5)
AATCC 8
humide 5 / sèche 5 (échelle 1-5)

solidité lumière

ISO 105-B02
5 (échelle 1-8)
AATCC 16.3: 60 hours
2.5 (échelle 1-5)

résistance au glissement à la couture

ASTM D434
warp 44 lbs / weft 49.5 lbs

entretien



rétrécissement: chaîne -0.9% / trame -0.6%



rétrécissement: chaîne -1.5% / trame -1.2%



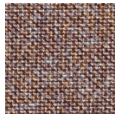
© Hochschule Niederrhein 2022

elba

8069.01 - 8069.20



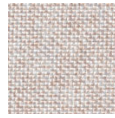
8069.01



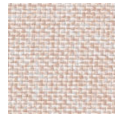
8069.02



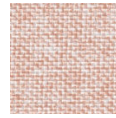
8069.03



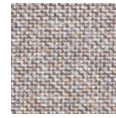
8069.04



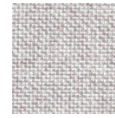
8069.05



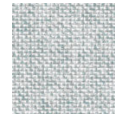
8069.06



8069.07



8069.08



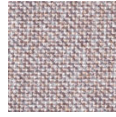
8069.09



8069.10



8069.11



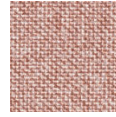
8069.12



8069.13



8069.14



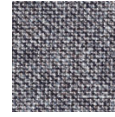
8069.15



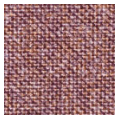
8069.16



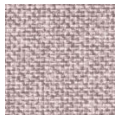
8069.17



8069.18



8069.19



8069.20