

togo

7031.01 - 7031.24



binder

upholstery 01

description

tissu d'ameublement uni mohair/soie

composition

70% mohair / 30% soie (base: coton)

largeur

± 140 cm, ± 55 inches

poids

± 765 gr/m¹, ± 25 oz/yd¹ fabrics

non feu

EN 1021/1-2

BS 5852, crib 5

UNI 9175, classe 1 IM

Cal TB 117

NFPA 260, class 1

NF P 92503-507, M1 with FR finish

résistance à l'abrasion

ISO 12947-2

85.000 rubs martindale

ASTM D4157

45.000 double rubs wyzenbeek

boulochage

ASTM D3511

5 (échelle 1-5)

résistance au frottement

AATCC 8

humide 4.5 / sèche 5 (échelle 1-5)

solidité lumière

ISO 105-B02

clair 3-4 / foncé 4-5 (échelle 1-8)

AATCC 16.3: 40 hours

2.5 (échelle 1-5)

résistance au glissement à la couture

ASTM D4034

chaîne 85 lbs / trame 80 lbs

résistance à la traction

ASTM D5034

chaîne 87 lbs / trame 137 lbs

informations complémentaires

cradle to cradle bronze certified

entretien



dry clean only



togo

7031.01 - 7031.24



7031.01



7031.02



7031.14



7031.03



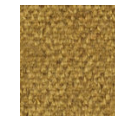
7031.06



7031.09



7031.04



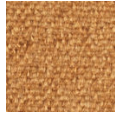
7031.05



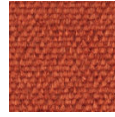
7031.08



7031.16



7031.15



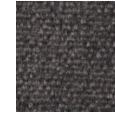
7031.18



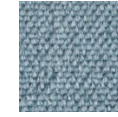
7031.17



7031.07



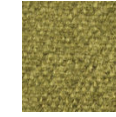
7031.10



7031.12



7031.13



7031.11



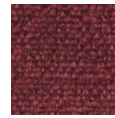
7031.24



7031.21



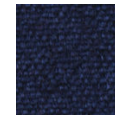
7031.20



7031.19



7031.23



7031.22