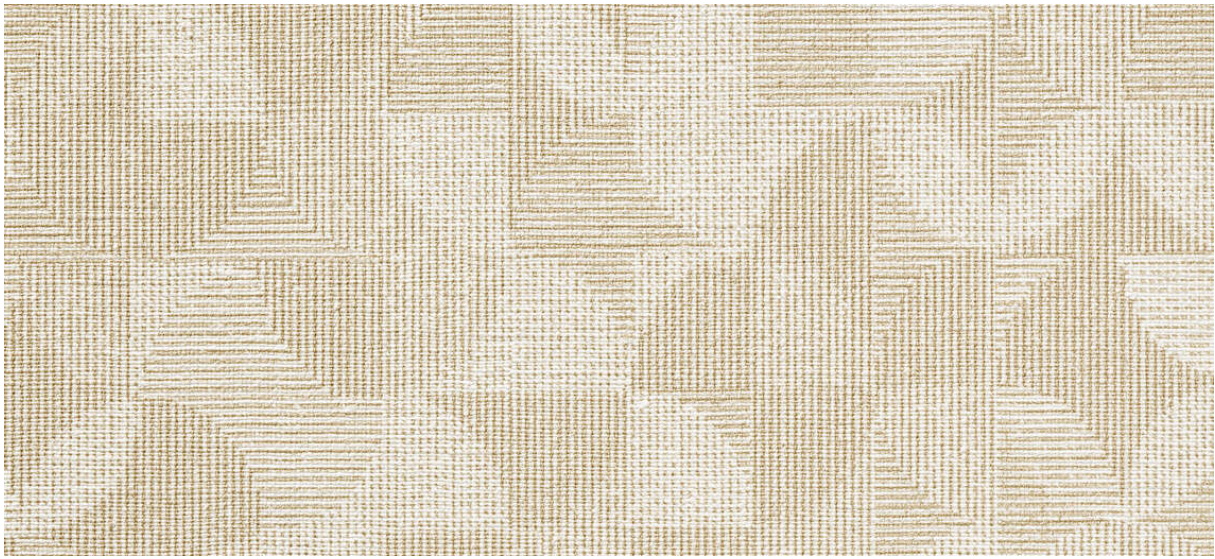


arches

7066.01 - 7066.17



collection

**upholstery
vinyl**

description

structure de tissage textile dynamique

composition

enduction vinylique, tricot polyester/coton

largeur

± 137-140 cm, ± 54-55 inches

poids

backing: ± 110 gr/m², ± 5 oz/yd¹

coating: ± 690 gr/m², ± 31 oz/yd¹

épaisseur

1.1 mm, 0.04 inches

non feu

EN 1021/1-2

BS 5852, crib 5

NF P 92/503 - 507, M2

NF D60-013 (AM 18)

DIN 4102, B2

UNI 9175, classe 1 IM

Cal TB 117

NFPA 260, class 1

IMO 2010 FTP part 8

résistance à l'abrasion

ISO 12947-2

> 300.000 rubs martindale

ASTM D4157

100.000 double rubs wyzenbeek

résistance au frottement

ISO 105-X12

wet 5 / dry 5 (scale 1-5)

AATCC 8

wet 5 / dry 5 (scale 1-5)

solidité lumière

ISO 105-B02

7 (scale 1-8)

ASTM D4329: 150 hours

4 (scale 1-5)

résistance au sang, à l'urine, à la sueur et au sébum

EN 12720

5 (scale 1-5)

résistance à la traction

ISO 1421

length 470 N / width 313 N

ASTM D2261

length 7 lbs / width 9 lbs

résistance à la flexion

ISO 7854

400.000 cycles

adhésion au revêtement

ASTM D751

length 8 lbf / width 5 lbf



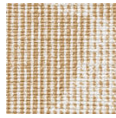
vinyl 
COMMITTED TO
SUSTAINABLE DEVELOPMENT

arches

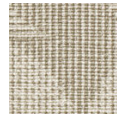
7066.01 - 7066.17



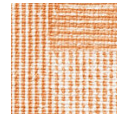
7066.01



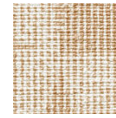
7066.02



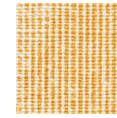
7066.03



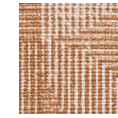
7066.04



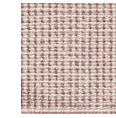
7066.05



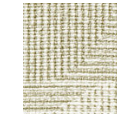
7066.06



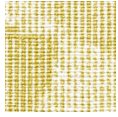
7066.07



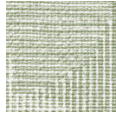
7066.08



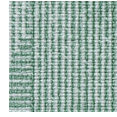
7066.09



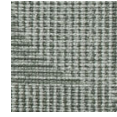
7066.10



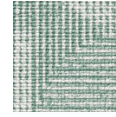
7066.11



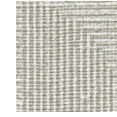
7066.12



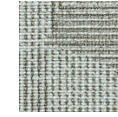
7066.13



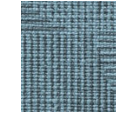
7066.14



7066.15



7066.16



7066.17