

# norfolk

7069.01 – 7069.16



collection

**upholstery  
textile**

description

**tissu d'ameublement bicolore composé à 100 % de déchets plastiques recyclés, un maillage graphique intégral à effet tridimensionnel**

composition

**100% recycled polyester FR**

largeur

**± 148 cm, ± 58 inches**

poids

**± 624 gr/m<sup>2</sup>, ± 20 oz/yd<sup>2</sup> fabrics**

non feu

**EN 1021/ 1-2**

**BS 5852, crib 5**

**NF D 60-013 (AM 18)**

**DIN 4102, B1**

**UNI 9175, classe 1.IM**

**Cal TB 117**

**NFPA 260, class 1**

**IMO 2010 FTP part 8**

résistance à l'abrasion

**ISO 12947-2**

70.000 rubs martindale

**ASTM D4157**

100.000 double rubs wyzenbeek

boulochage

**ISO 12945-2**

4-5 (échelle 1-5)

résistance au frottement

**ISO 105-X12**

humide 4-5 / sèche 4-5 (échelle 1-5)

solidité lumière

**ISO 105-B02**

6 (échelle 1-8)

résistance au glissement à la couture

**ISO 13936-2**

chaîne 3 mm / trame 2 mm

résistance à la traction

**ISO 13934-1**

chaîne 1320 N / trame >2500 N

entretien



**rétrécissement: chaîne -2% / trame -3%**



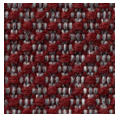
STANDARD  
100

S21-3365  
Hohenstein HTTI

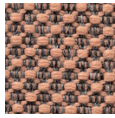
# **norfolk**

7069.01 – 7069.16

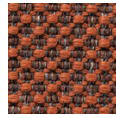
---



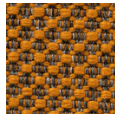
7069.01



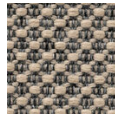
7069.02



7069.03



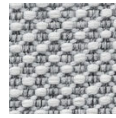
7069.04



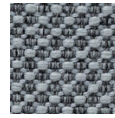
7069.05



7069.06



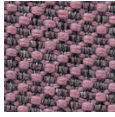
7069.07



7069.08



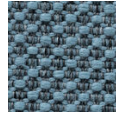
7069.09



7069.10



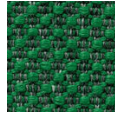
7069.11



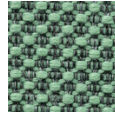
7069.12



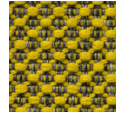
7069.13



7069.14



7069.15



7069.16