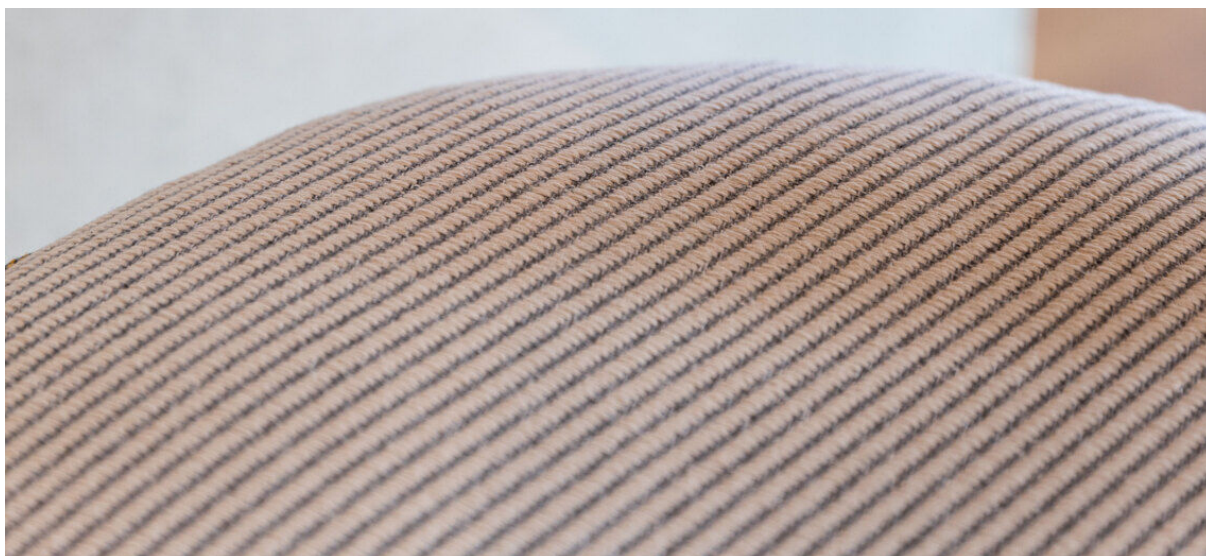


harding

7070.01 – 7070.08



collection

**upholstery
textile**

description

**tissu d'ameublement bicolore en sergé
composé à 100 % de déchets plastiques
recyclés**

composition

100% recycled polyester FR

largeur

± 151 cm, ± 59 inches

poids

± 660 gr/m¹, ± 21 oz/yd¹ fabrics

non feu

EN 1021/ 1-2

BS 5852, crib 5

NF D 60-013 (AM 18)

DIN 4102, B1

UNI 9175, classe 1.IM

Cal TB 117

NFPA 260, class 1

IMO 2010 FTP part 8

résistance à l'abrasion

ISO 12947-2

130.000 rubs martindale

ASTM D4157

100.000 double rubs wyzenbeek

boulochage

ISO 12945-2

4-5 (échelle 1-5)

résistance au frottement

ISO 105-X12

humide 4-5 / sèche 4-5 (échelle 1-5)

solidité lumière

ISO 105-B02

6 (échelle 1-8)

résistance au glissement à la couture

ISO 13936-2

chaîne 3 mm / trame 2 mm

résistance à la traction

ISO 13934-1

chaîne 1220 N / trame >2500 N

entretien



**rétrécissement: chaîne -2% / trame
-2%**

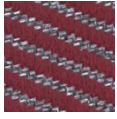


STANDARD
100

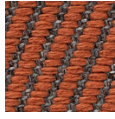
S21-3365
Hohenstein HTTI

harding

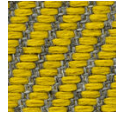
7070.01 – 7070.08



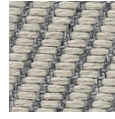
7070.01



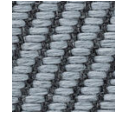
7070.02



7070.03



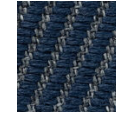
7070.04



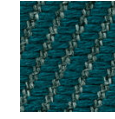
7070.05



7070.06



7070.07



7070.08