

moore

7075.01 – 7075.16



collection

**upholstery
textile**

description

**tissu d'ameublement 100 % recyclé avec
une grille tactile et graphique dans un
tissage multicolore à grande échelle en 16
coloris**

composition

100% recycled polyester FR

largeur

± 141 cm, ± 56 inches

poids

± 835 gr/m¹, ± 27 oz/yd¹ fabrics

non feu

EN 1021/1-2

BS 5852, crib 5

NF P 92 / 503 – 507, M1

DIN 4102, B1

UNI 9175, classe 1 IM

Cal TB 117

NFPA 260, class 1

IMO 2010 FTP part 8

résistance à l'abrasion

ISO 12947-2

70.000 rubs martindale

ASTM D4157

100.000 double rubs wyzenbeek

boulochage

ISO 12945-2

4-5 (échelle 1-5)

ASTM D3511

5 (échelle 1-5)

résistance au frottement

ISO 105-X12

humide 4-5 / sèche 4-5 (échelle 1-5)

AATCC 8

humide 5 / sèche 5 (échelle 1-5)

solidité lumière

ISO 105-B02

5-6 (échelle 1-8)

AATCC 16.3: 40 hours

4.5 (échelle 1-5)

résistance au glissement à la couture

ISO 13936-2

chaîne 2 mm / trame 2 mm

ASTM D4034

warp 136 lbs / weft 126 lbs

résistance à la traction

ISO 13934-1

chaîne 1790 N / trame 1760 N

ASTM D5034

warp 302 lbs / weft 296 lbs

entretien



**rétrécissement: chaîne -1.6% / trame
-3%**

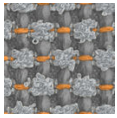


STANDARD
100

S21-3365
Hohenstein HTTI

moore

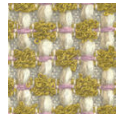
7075.01 – 7075.16



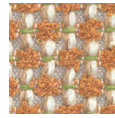
7075.01



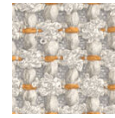
7075.02



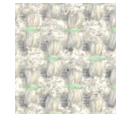
7075.03



7075.04



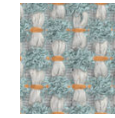
7075.05



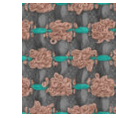
7075.06



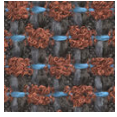
7075.07



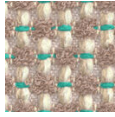
7075.08



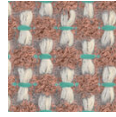
7075.09



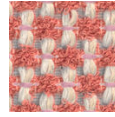
7075.10



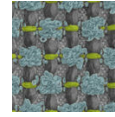
7075.11



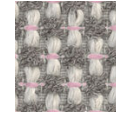
7075.12



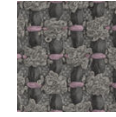
7075.13



7075.14



7075.15



7075.16