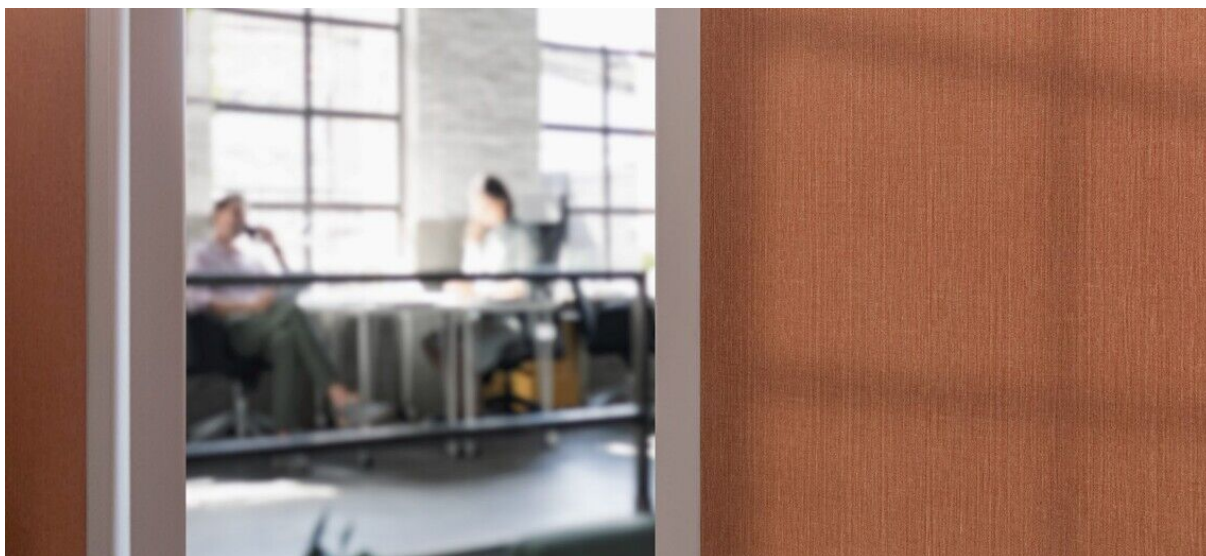


lismore

1097.01 - 1097.30



collection
**wallcovering
vinyl**

description
aspect lin raffiné

composition
**couche vinyle, impression au moyen
d'encre à base d'eau, support en coton**

largeur
± 130 cm, ± 51 inches

poids
± 350 gr/m², ± 15 oz/yd¹

absorption acoustique
ISO 354, alphaw 0.10

non feu
**EN 13501, B s1 d0
IMO 2010 FTP part 2-5
ASTM E84, A**

solidité lumière
ISO 105-B02
clair 8 / foncé 8 (échelle 1 – 8)
CCC-W-408D

perméabilité à la vapeur d'eau
ISO 15106-3 / EN ISO 12572
Sd value ± 9 m



vinyl COMMITTED TO
SUSTAINABLE DEVELOPMENT

CE EN 15102



lismore

1097.01 - 1097.30



1097.01



1097.02



1097.03



1097.04



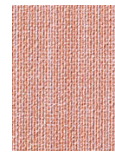
1097.05



1097.06



1097.07



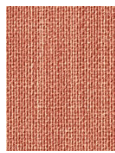
1097.08



1097.09



1097.10



1097.11



1097.12



1097.13



1097.14



1097.15



1097.16



1097.17



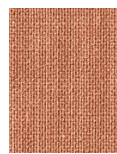
1097.18



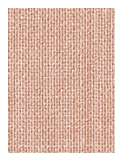
1097.19



1097.20



1097.21



1097.22



1097.23



1097.24



1097.25



1097.26



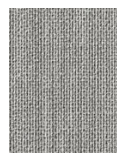
1097.27



1097.28



1097.29



1097.30