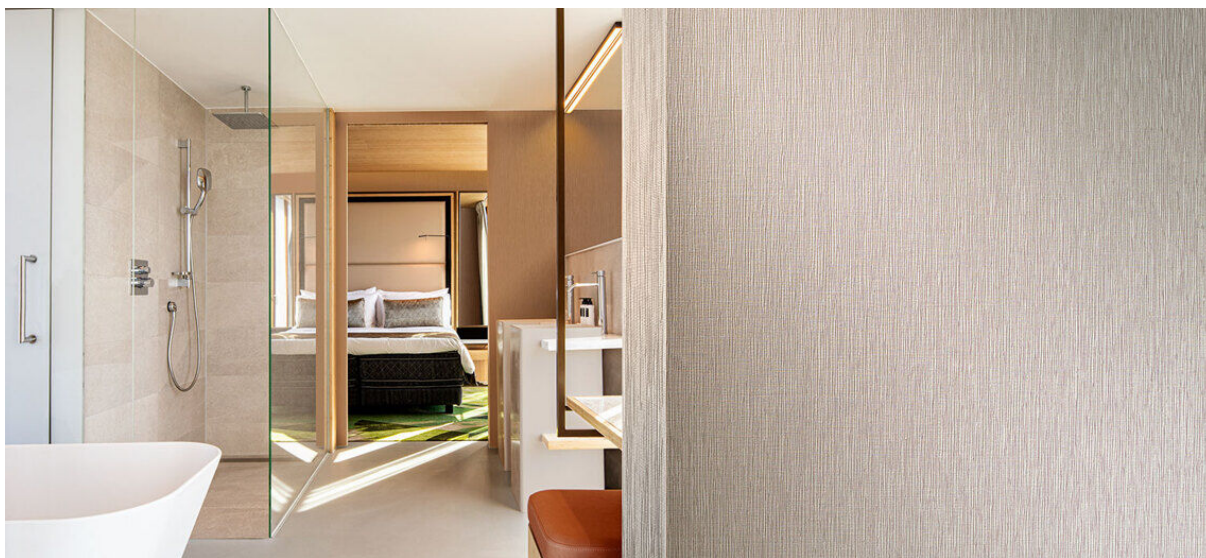


wutai

1105.01 - 1105.14



collection
wallcovering
vinyl

description
grain organique mat, vertical, inspiré du bois et de l'écorce des arbres dans des tons naturels

composition
couche vinyle, impression au moyen d'encres à base d'eau, support en coton

largeur
± 130 cm, ± 51 inches

poids
± 550 gr/m², ± 23 oz/yd¹

non feu
**EN 13501, B s2 d0
ASTM E84, A
NFPA 286**

solidité lumière
**ISO 105-B02
8 (scale 1-8)
CCC-W-408D**

type II

perméabilité à la vapeur d'eau
ISO 15106-3 / EN ISO 12572
Sd value ± 9,5 m

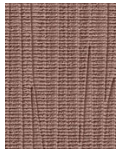
vinyl  COMMITTED TO SUSTAINABLE DEVELOPMENT

CE EN 15102



wutai

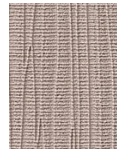
1105.01 - 1105.14



1105.01



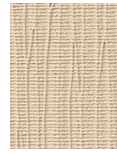
1105.02



1105.03



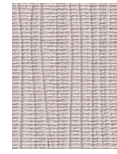
1105.04



1105.05



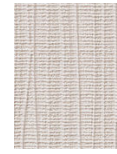
1105.06



1105.07



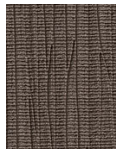
1105.08



1105.09



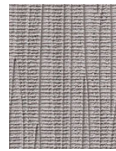
1105.10



1105.11



1105.12



1105.13



1105.14