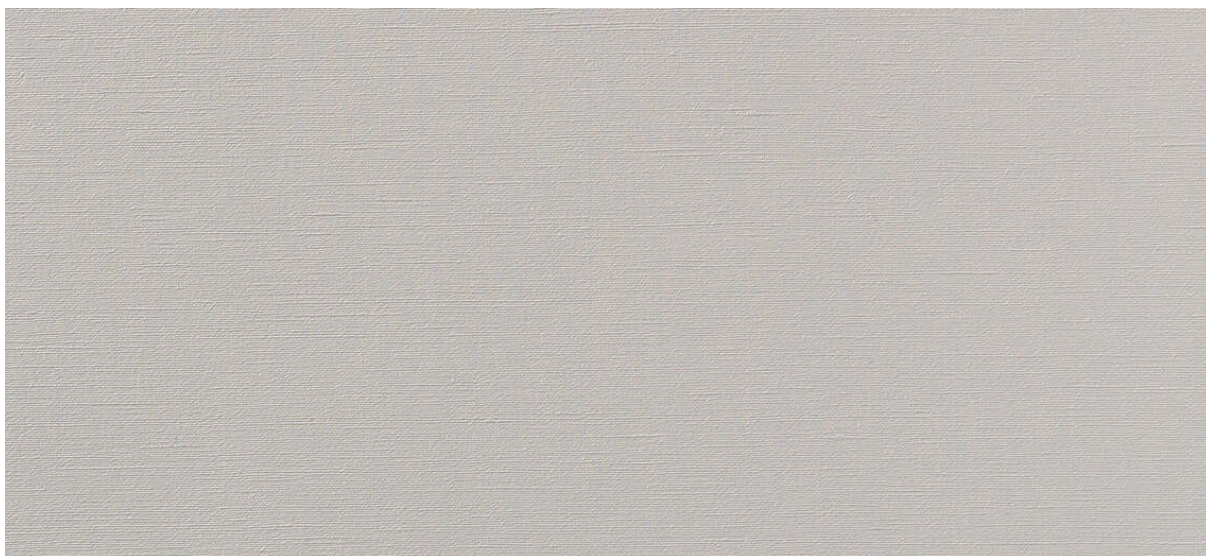


dalma

7024.01 - 7024.22



binder

**upholstery
vinyl**

descrizione

struttura di tessuto di seta

composizione

**spalmatura vinilica spugnosa, tessuto in
cotone e poliestere**

altezza

± 137-140 cm, ± 54-55 inches

peso

**tessuto: ± 110 gr/m², ± 5 oz/yd¹
spalmato: ± 690 gr/m², ± 31 oz/yd¹**

spessore

1.1 mm, 0.04 inches

resistenza al fuoco

**EN 1021/1-2
BS 5852, crib 5
NF P 92/503 - 507, M2
NF D60-013 (AM 18)
DIN 4102, B2
UNI 9175, classe 1 IM
Cal TB 117
NFPA 260, class 1
IMO 2010 FTP part 8**

resistenza all'abrasione

ISO 12947-2
> 300.000 rubs martindale
ASTM D4157
100.000 double rubs wyzenbeek

solidità allo sfregamento

ISO 105-X12
wet 5 / dry 5 (scale 1-5)
AATCC 8
wet 5 / dry 5 (scale 1-5)

resistenza alla luce

ISO 105-B02
7 (scale 1-8)
ASTM D4329: 150 hours
4 (scale 1-5)

resistenza a sangue, urina, sudore e sebo cutaneo

EN 12720
5 (scale 1-5)

resistenza alla trazione

ISO 1421
length 470 N / width 313 N
ASTM D2261
length 7.3 lbs / width 9.2 lbs

resistenza alla flessione

ISO 7854
400.000 cycles

aderenza del rivestimento

ASTM D751
length 8.3 lbf / width 5.2 lbf



vinyl 
COMMITTED TO
SUSTAINABLE DEVELOPMENT

dalma

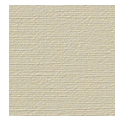
7024.01 - 7024.22



7024.01



7024.02



7024.03



7024.04



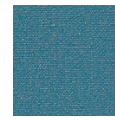
7024.05



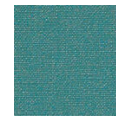
7024.06



7024.07



7024.08



7024.09



7024.10



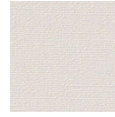
7024.11



7024.12



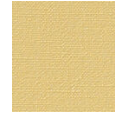
7024.13



7024.14



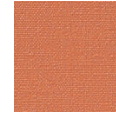
7024.15



7024.16



7024.17



7024.18



7024.19



7024.20



7024.21



7024.22