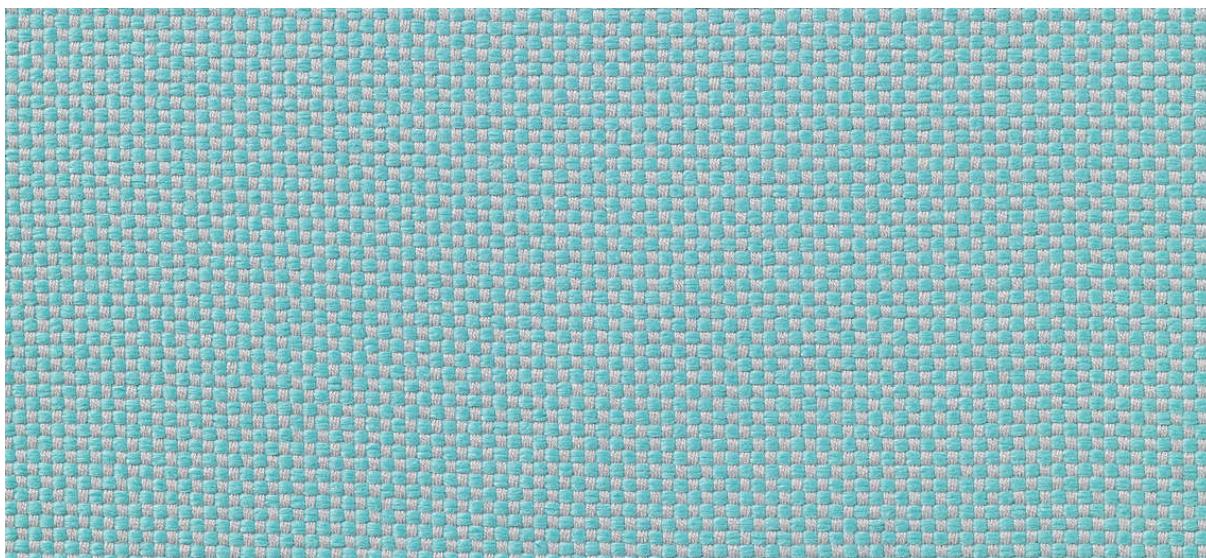


samar

7052.01 - 7052.51



collezione

**upholstery
textile**

descrizione

blocchetti di tessuto

composizione

**73% recycled polyester FR / 27% polyester
FR**

altezza

± 140 cm, ± 55 inches

peso

± 663 gr/m¹, ± 21 oz/yd¹ fabrics

resistenza al fuoco

EN 1021/1-2

BS 5852, crib 5

NF P 92/503-507, M1

DIN 4102, B1

IMO 2010 FTP part 8

UNI 9175, classe 1 IM

Cal TB 117

NFPA 260, class 1

resistenza all'abrasione

ISO 12947-2

>50.000 rubs martindale

ASTM D4157

42.000 double rubs wyzenbeek

resistenza al pilling

4 (scala 1-5)ISO 12945-2

4-5 (scala 1-5)

ASTM D3511

5 (scala 1-5)

solidità allo sfregamento

ISO 105-X12

bagnato 4-5 / asciutto 4-5 (scala 1-5)

AATCC 8

bagnato 5 / asciutto 5 (scala 1-5)

resistenza alla luce

ISO 105-B02

6 (scala 1-8)

AATCC 16.3: 40 hours

4 (scala 1-5)

resistenza al taglio cucitura

ISO 13936 - 2

catena 3 mm / trama 2 mm

ASTM D4034

catena 99 lbf / trama 81 lbf

resistenza alla trazione

ASTM D5034

warp 31.6 lbs / weft 60.9 lbs

manutenzione



restringimento: catena -1.6% / trama -1%



restringimento: catena -3% / trama -1.4%



STANDARD
100

S07-0023
Hohenstein HTTI

samar

7052.01 - 7052.51



7052.01



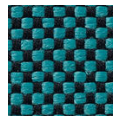
7052.02



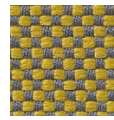
7052.03



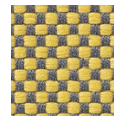
7052.04



7052.05



7052.06



7052.07



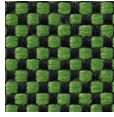
7052.08



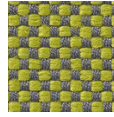
7052.09



7052.10



7052.11



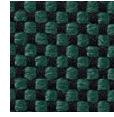
7052.12



7052.13



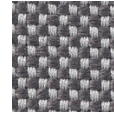
7052.14



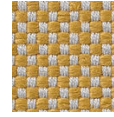
7052.15



7052.16



7052.17



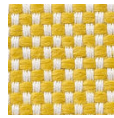
7052.18



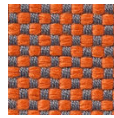
7052.19



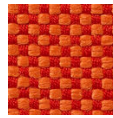
7052.20



7052.21



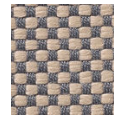
7052.22



7052.23



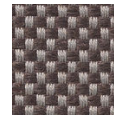
7052.24



7052.25



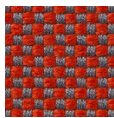
7052.26



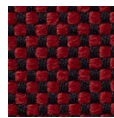
7052.27



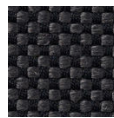
7052.28



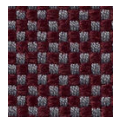
7052.29



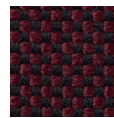
7052.30



7052.31



7052.32



7052.33



7052.34



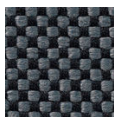
7052.35



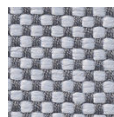
7052.36



7052.37



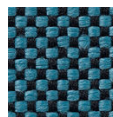
7052.38



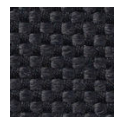
7052.39



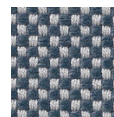
7052.40



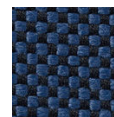
7052.41



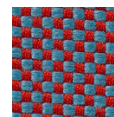
7052.42



7052.43



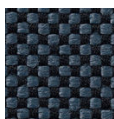
7052.44



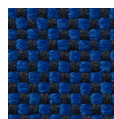
7052.45



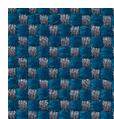
7052.46



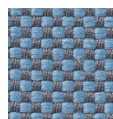
7052.47



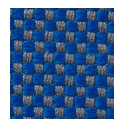
7052.48



7052.49



7052.50



7052.51