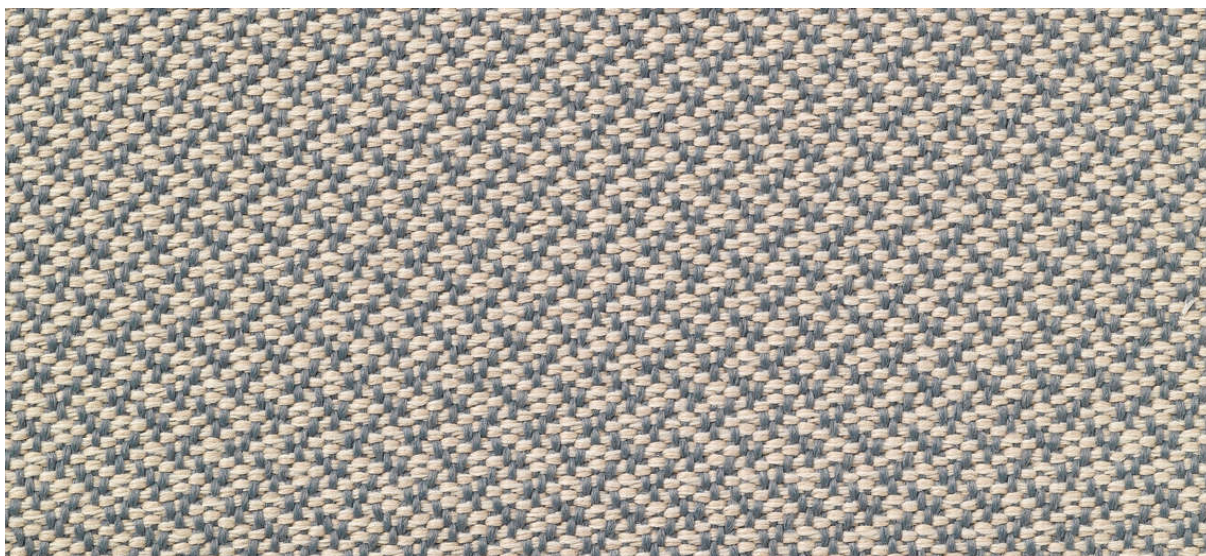


deans

7048.01 - 7048.15



binder

upholstery 02

descrizione

tessuto double-face, con un lato a tinta unita e un motivo mélange sul retro

composizione

100% poliestere con trattamento antifiama

altezza

± 138 cm, ± 54 inches

peso

± 861 gr/m¹, ± 28 oz/yd¹ fabrics

resistenza al fuoco

EN 1021/ 1- 2

BS 5852, crib 5

NF P 92 / 503 - 507, M1

DIN 4102, B1

IMO 2010 FTP part 8

UNI 9175, classe 1 IM

Cal TB 117

NFPA 260, class 1

resistenza all'abrasione

ISO 12947-2

110.000 rubs martindale

ASTM D4157

100.000 double rubs wyzenbeek

resistenza al pilling

ISO 12945-2

4 (scala 1-5)

ASTM D3511

5 (scala 1-5)

solidità allo sfregamento

ISO 105-X12

bagnato 4-5 / asciutto 4-5 (scala 1-5)

AATCC 8

bagnato 5 / asciutto 5 (scala 1-5)

resistenza alla luce

ISO 105-B02

6-7 (scala 1-8)

AATCC 16.3: 40 hours

5 (scala 1-5)

resistenza al taglio cucitura

ISO 13936-2

catena 4.3 mm / trama 3 mm

ASTM D4034

catena 39 lbf / trama 85 lbf

resistenza alla trazione

ASTM D5034

warp 560 lbs / weft 560 lbs

manutenzione



restringimento: catena -1.4% / trama -2%



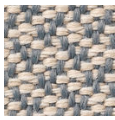
restringimento: catena -2% / trama -3%



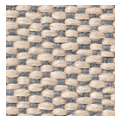
OEKO-TEX®
CONFIDENCE IN TEXTILES
STANDARD 100 
S07-0023 HOHENSTEIN HTTI
Tested for harmful substances.
www.oeko-tex.com/standard100

deans

7048.01 - 7048.15



7048.01
M



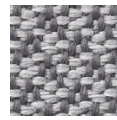
7048.01
P



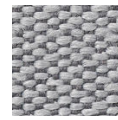
7048.02
M



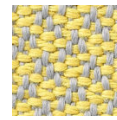
7048.02
P



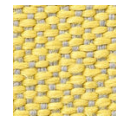
7048.03
M



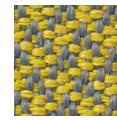
7048.03
P



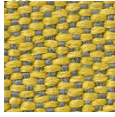
7048.04
M



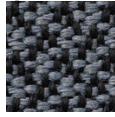
7048.04
P



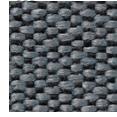
7048.05
M



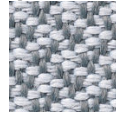
7048.05
P



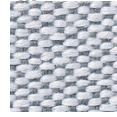
7048.06
M



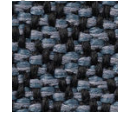
7048.06
P



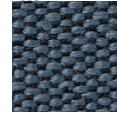
7048.07
M



7048.07
P



7048.08
M



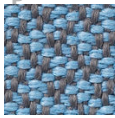
7048.08
P



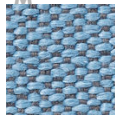
7048.09
M



7048.09
P



7048.10
M



7048.10
P



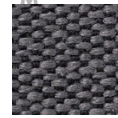
7048.11
M



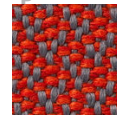
7048.11
P



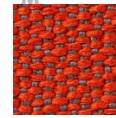
7048.12
M



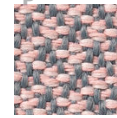
7048.12
P



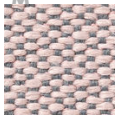
7048.13
M



7048.13
P



7048.14
M



7048.14
P



7048.15
M



7048.15
P