

# creek

7053.01 - 7053.22



collezione

**upholstery  
vinyl**

descrizione

**effetto lino irregolare a 3 colori**

composizione

**spalmatura vinilica spugnosa, tessuto in cotone e poliestere**

altezza

**± 137-140 cm, ± 54-55 inches**

peso

**tessuto: ± 110 gr/m<sup>2</sup>, ± 5 oz/yd<sup>1</sup>  
spalmato: ± 690 gr/m<sup>2</sup>, ± 31 oz/yd<sup>1</sup>**

spessore

**1.1 mm, 0.04 inches**

resistenza al fuoco

**EN 1021/1-2  
BS 5852, crib 5  
NF P 92/503 - 507, M2  
NF D60-013 (AM 18)  
DIN 4102, B2  
UNI 9175, classe 1 IM  
Cal TB 117  
NFPA 260, class 1  
IMO 2010 FTP part 8**

resistenza all'abrasione

**ISO 12947-2**  
> 300.000 rubs martindale  
**ASTM D4157**  
100.000 double rubs wyzenbeek

solidità allo sfregamento

**ISO 105-X12**  
wet 5 / dry 5 (scale 1-5)  
**AATCC 8**  
wet 5 / dry 5 (scale 1-5)

resistenza alla luce

**ISO 105-B02**  
7 (scale 1-8)  
**ASTM D4329: 150 hours**  
4 (scale 1-5)

resistenza a sangue, urina, sudore e sebo cutaneo

**EN 12720**  
5 (scale 1-5)

resistenza alla trazione

**ISO 1421**  
length 470 N / width 313 N  
**ASTM D2261**  
length 7.3 lbs / width 9.2 lbs

resistenza alla flessione

**ISO 7854**  
400.000 cycles

aderenza del rivestimento

**ASTM D751**  
length 8.3 lbf / width 5.2 lbf

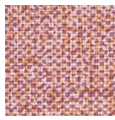


**vinyl**   
COMMITTED TO  
SUSTAINABLE DEVELOPMENT

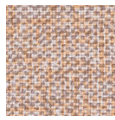
# creek

7053.01 - 7053.22

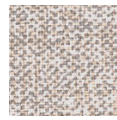
---



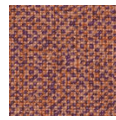
7053.01



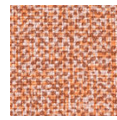
7053.02



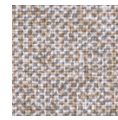
7053.03



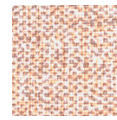
7053.04



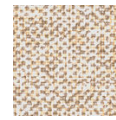
7053.05



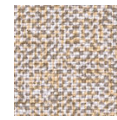
7053.06



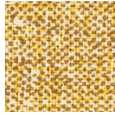
7053.07



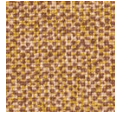
7053.08



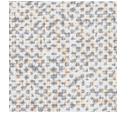
7053.09



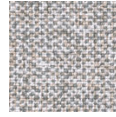
7053.10



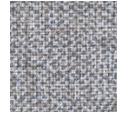
7053.11



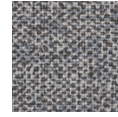
7053.12



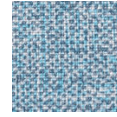
7053.13



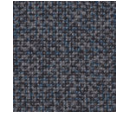
7053.14



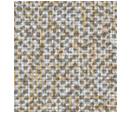
7053.15



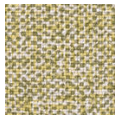
7053.16



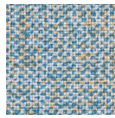
7053.17



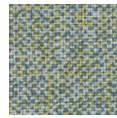
7053.18



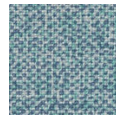
7053.19



7053.20



7053.21



7053.22