

# rolla

7065.01 - 7065.20



binder

**upholstery**

composizione

**88% recycled polyester FR / 12% polyester FR**

altezza

**± 140 cm, ± 55 inches**

peso

**± 775 gr/m<sup>1</sup>, ± 25 oz/yd<sup>1</sup> fabrics**

resistenza al fuoco

**EN 1021/ 1-2**

**BS 5852, crib 5**

**NF P 92 / 503 - 507, M1**

**DIN 4102, B1**

**UNI 9175, classe 1.IM**

**Cal TB 117**

**NFPA 260, class 1**

**IMO 2010 FTP part 8**

resistenza all'abrasione

**ISO 12947-2**

50.000 rubs martindale

**ASTM D4157**

100.000 double rubs wyzenbeek

resistenza al pilling

**ISO 12945-2**

4 (scala 1-5)

**ASTM D3511**

3 (scala 1-5)

solidità allo sfregamento

**ISO 105-X12**

bagnato 4-5 / asciutto 4-5 (scala 1-5)

**AATCC 8**

bagnato 5 / asciutto 4.5 (scala 1-5)

resistenza alla luce

**ISO 105-B02**

6 (scala 1-8)

**AATCC 16.3: 40 hours**

4 (scala 1-5)

resistenza al taglio cucitura

**ISO 13936 - 2**

catena 2.3 mm / trama 2 mm

**ASTM D4034**

catena 102 lbs / trama 83 lbs

resistenza alla trazione

**ISO 13934-1**

warp 1120 N / weft 2500 N

**ASTM D5034**

warp 239 lbs / weft 560 lbs

manutenzione



**restringimento: catena -2.8% / trama -2.6%**

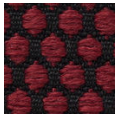


STANDARD  
100  
S07-0023  
Hohenstein HTTI

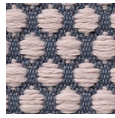
# rolla

7065.01 - 7065.20

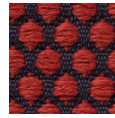
---



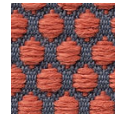
7065.01



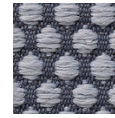
7065.02



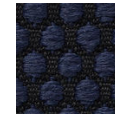
7065.03



7065.04



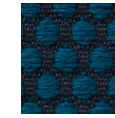
7065.05



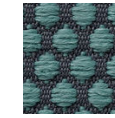
7065.06



7065.07



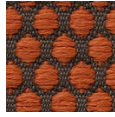
7065.08



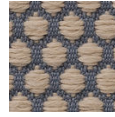
7065.09



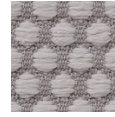
7065.10



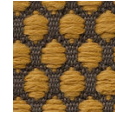
7065.11



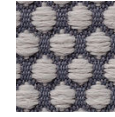
7065.12



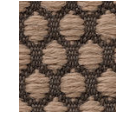
7065.13



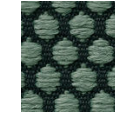
7065.14



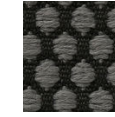
7065.15



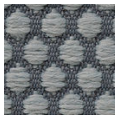
7065.16



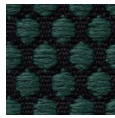
7065.17



7065.18



7065.19



7065.20