

wilson

7067.01 - 7067.21



collezione
**upholstery
textile**

descrizione
**tessuto per l'arredamento in tinta unita
realizzato al 100% con filati da plastiche
riciclate, opaco e morbido al tatto**

composizione
100% recycled polyester FR

altezza
± 150 cm, ± 59 inches

peso
± 771 gr/m¹, ± 25 oz/yd¹ fabrics

resistenza al fuoco
**EN 1021/ 1-2
BS 5852, crib 5
NF D 60-013 (AM 18)
DIN 4102, B1
UNI 9175, classe 1.IM
Cal TB 117
NFPA 260, class 1
IMO 2010 FTP part 8**

resistenza all'abrasione
ISO 12947-2
80.000 rubs martindale
ASTM D4157
100.000 double rubs wyzenbeek

resistenza al pilling
ISO 12945-2
4-5 (scala 1-5)

solidità allo sfregamento
ISO 105-X12
bagnato 4-5 / asciutto 4-5 (scala 1-5)

resistenza alla luce
ISO 105-B02
6 (scala 1-8)

resistenza al taglio cucitura
ISO 13936-2
catena 4 mm / trama 2 mm

resistenza alla trazione
ISO 13934-1
catena 1480 N / trama >2500 N

manutenzione



restringimento: catena -1.6% / trama -2.8%

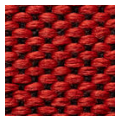


STANDARD
100

S21-3365
Hohenstein HTTI

wilson

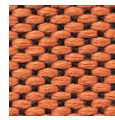
7067.01 - 7067.21



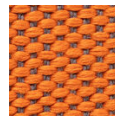
7067.01



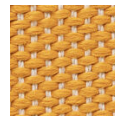
7067.02



7067.03



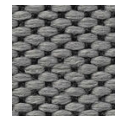
7067.04



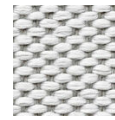
7067.05



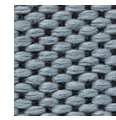
7067.06



7067.07



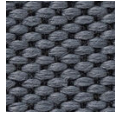
7067.08



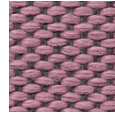
7067.09



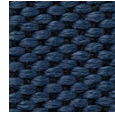
7067.10



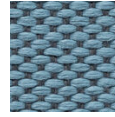
7067.11



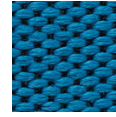
7067.12



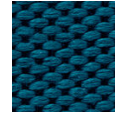
7067.13



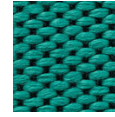
7067.14



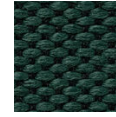
7067.15



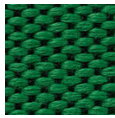
7067.16



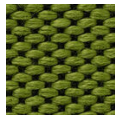
7067.17



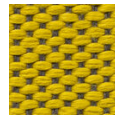
7067.18



7067.19



7067.20



7067.21