

# foster

7072.01 – 7072.27



collezione

**upholstery  
textile**

descrizione

**bouclé in tinta unita, versatile e soffice al tatto**

composizione

**97% recycled polyester FR / 3% polyester FR**

altezza

**± 141 cm, ± 56 inches**

peso

**± 749 gr/m<sup>1</sup>, ± 24 oz/yd<sup>1</sup> fabrics**

resistenza al fuoco

**EN 1021/1-2**

**BS 5852, crib 5**

**NF P 92 / 503 – 507, M1**

**DIN 4102, B1**

**UNI 9175, classe 1.IM**

**Cal TB 117**

**NFPA 260, class 1**

**IMO 2010 FTP part 8**

resistenza all'abrasione

**ISO 12947-2**

60.000 rubs martindale

**ASTM D4157**

100.000 double rubs wyzenbeek

resistenza al pilling

**ISO 12945-2**

4 (scala 1-5)

**ASTM D3511**

5 (scala 1-5)

solidità allo sfregamento

**ISO 105-X12**

bagnato 4-5 / asciutto 4-5 (scala 1-5)

**AATCC 8**

bagnato 5 / asciutto 5 (scala 1-5)

resistenza alla luce

**ISO 105-B02**

6 (scala 1-8)

**AATCC 16.3: 40 hours**

5 (scala 1-5)

resistenza al taglio cucitura

**ISO 13936-2**

catena 4 mm / trama 2 mm

**ASTM D4034**

warp 51 lbs / weft 106 lbs

resistenza alla trazione

**ISO 13934-1**

catena 1370 N / trama 1220 N

**ASTM D5034**

warp 263 lbs / weft 234 lbs

manutenzione



**restringimento: catena -2% / trama -1.7%**



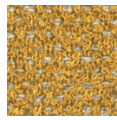
STANDARD  
100

S21-3365  
Hohenstein HTTI

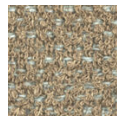
# foster

7072.01 – 7072.27

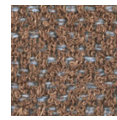
---



7072.01



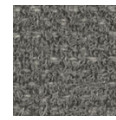
7072.02



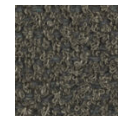
7072.03



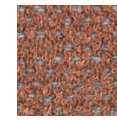
7072.04



7072.05



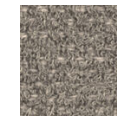
7072.06



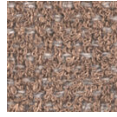
7072.07



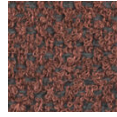
7072.08



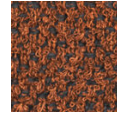
7072.09



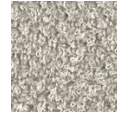
7072.10



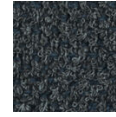
7072.11



7072.12



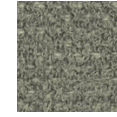
7072.13



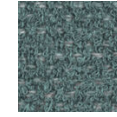
7072.14



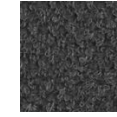
7072.15



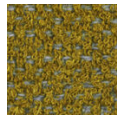
7072.16



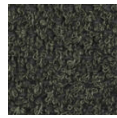
7072.17



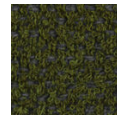
7072.18



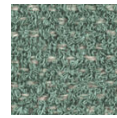
7072.19



7072.20



7072.21



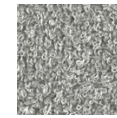
7072.22



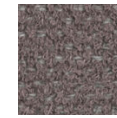
7072.23



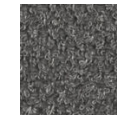
7072.24



7072.25



7072.26



7072.27