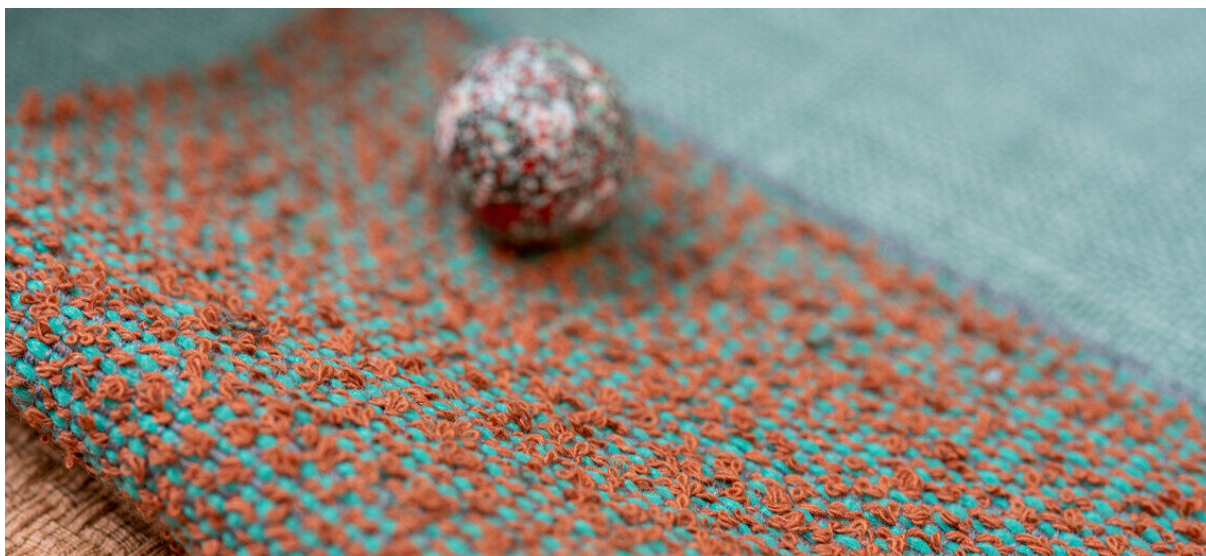


auckland

7071.01 – 7071.34



collezione

**upholstery
textile**

descrizione

**bouclé bicolore contrastato e
multidirezionale**

composizione

**76% recycled polyester FR / 24% polyester
FR**

altezza

± 141 cm, ± 56 inches

peso

± 704 gr/m¹, ± 23 oz/yd¹ fabrics

resistenza al fuoco

EN 1021/1-2

BS 5852, crib 5

NF P 92503-507, M1

NF D 60-013 (AM 18)

DIN 4102, B1

UNI 9175, classe 1.IM

Cal TB 117

NFPA 260, class 1

IMO 2010 FTP part 8

resistenza all'abrasione

ISO 12947-2

60.000 rubs martindale

ASTM D4157

80.000 double rubs wyzenbeek

resistenza al pilling

ISO 12945-2

4 (scala 1-5)

ASTM D3511

5 (scala 1-5)

solidità allo sfregamento

ISO 105-X12

bagnato 4-5 / asciutto 4-5 (scala 1-5)

AATCC 8

bagnato 5 / asciutto 5 (scala 1-5)

resistenza alla luce

ISO 105-B02

6 (scala 1-8)

AATCC 16.3: 40 hours

5 (scala 1-5)

resistenza al taglio cucitura

ISO 13936-2

catena 3 mm / trama 3 mm

ASTM D4034

warp 128 lbs / weft 112 lbs

resistenza alla trazione

ISO 13934-1

catena 1550 N / trama 2500 N

ASTM D5034

warp 220 lbs / weft 402 lbs

manutenzione



restringimento: catena -2.4% / trama -1.4%

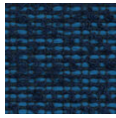


STANDARD
100

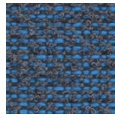
S21-3365
Hohenstein HTTI

auckland

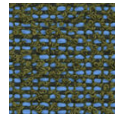
7071.01 – 7071.34



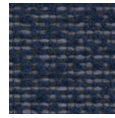
7071.01



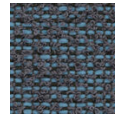
7071.02



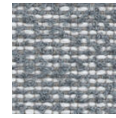
7071.03



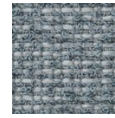
7071.04



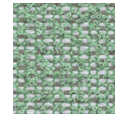
7071.05



7071.06



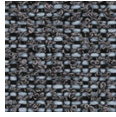
7071.07



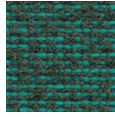
7071.08



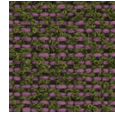
7071.09



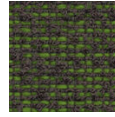
7071.10



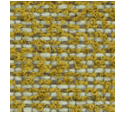
7071.11



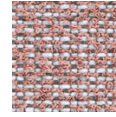
7071.12



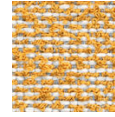
7071.13



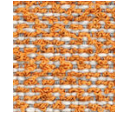
7071.14



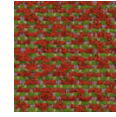
7071.15



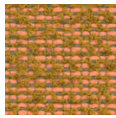
7071.16



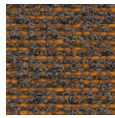
7071.17



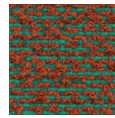
7071.18



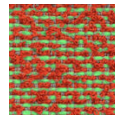
7071.19



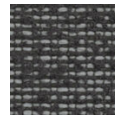
7071.20



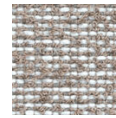
7071.21



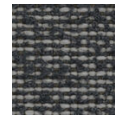
7071.22



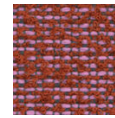
7071.23



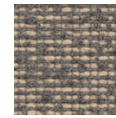
7071.24



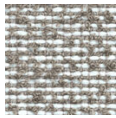
7071.25



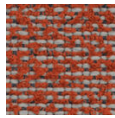
7071.26



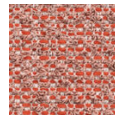
7071.27



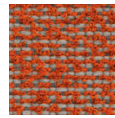
7071.28



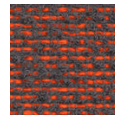
7071.29



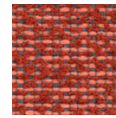
7071.30



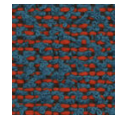
7071.31



7071.32



7071.33



7071.34