

melvin

1017.01 - 1017.27



collezione
**wallcovering
vinyl**

descrizione
look cemento

composizione
**tessuto in puro cotone con spalmatura di
monomeri vinilici completamente
polimerizzati, stampato con inchiostri a base
acquosa**

altezza
± 130 cm, ± 51/52 inches

peso
± 350 gr/m², ± 15 oz/yd¹

assorbimento del suono
ISO 354, alphaw 0.10

resistenza al fuoco
**EN 13501, B s1 d0
ASTM E84, A
NFPA 286**

permeabilità al vapore acqueo
ISO 15106-3 / EN ISO 12572
Sd value ± 9 m



vinyl COMMITTED TO
SUSTAINABLE DEVELOPMENT

CE EN 15102

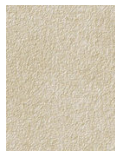


melvin

1017.01 - 1017.27



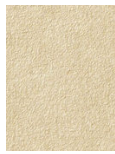
1017.13



1017.06



1017.02



1017.05



1017.08



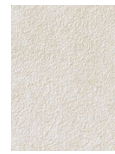
1017.24



1017.07



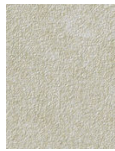
1017.04



1017.03



1017.10



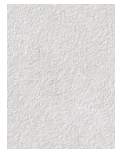
1017.16



1017.14



1017.11



1017.19



1017.22



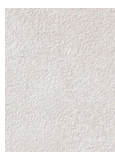
1017.09



1017.25



1017.21



1017.01



1017.20



1017.26



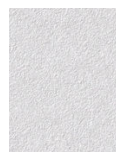
1017.18



1017.17



1017.15



1017.12



1017.23



1017.27