

# florence

1081.01 - 1081.30



collezione  
**wallcovering**  
**03**  
**vinyl**

descrizione  
**effetto seta multicolor o tono su tono**

composizione  
**tessuto in puro cotone con spalmatura di monomeri vinilici completamente polimerizzati, stampato con inchiostri a base acquosa**

altezza  
**± 130 cm, ± 51 inches**

peso  
**± 350 gr/m<sup>2</sup>, ± 15 oz/yd<sup>1</sup>**

assorbimento del suono  
**ISO 354, alphaw 0.10**

resistenza al fuoco  
**EN 13501, B s1 d0**  
**IMO 2010 FTP part 2-5**  
**ASTM E84, A**  
**NFPA 286**

resistenza alla luce  
**ISO 105-B02**  
8 (scala 1-8)  
**CCC-W-408D**



**vinyl** COMMITTED TO SUSTAINABLE DEVELOPMENT

**CE** EN 15102



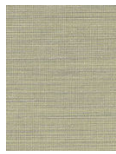
# florence

1081.01 - 1081.30

---



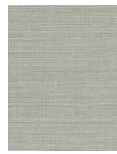
1081.01



1081.02



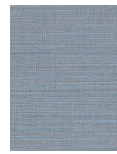
1081.03



1081.04



1081.05



1081.06



1081.07



1081.08



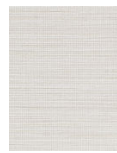
1081.09



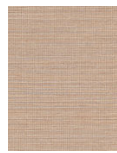
1081.10



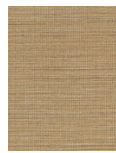
1081.11



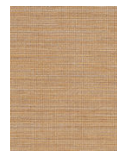
1081.12



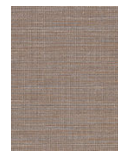
1081.13



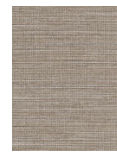
1081.14



1081.15



1081.16



1081.17



1081.18



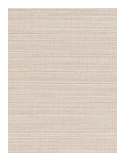
1081.19



1081.20



1081.21



1081.22



1081.23



1081.24



1081.25



1081.26



1081.27



1081.28



1081.29



1081.30