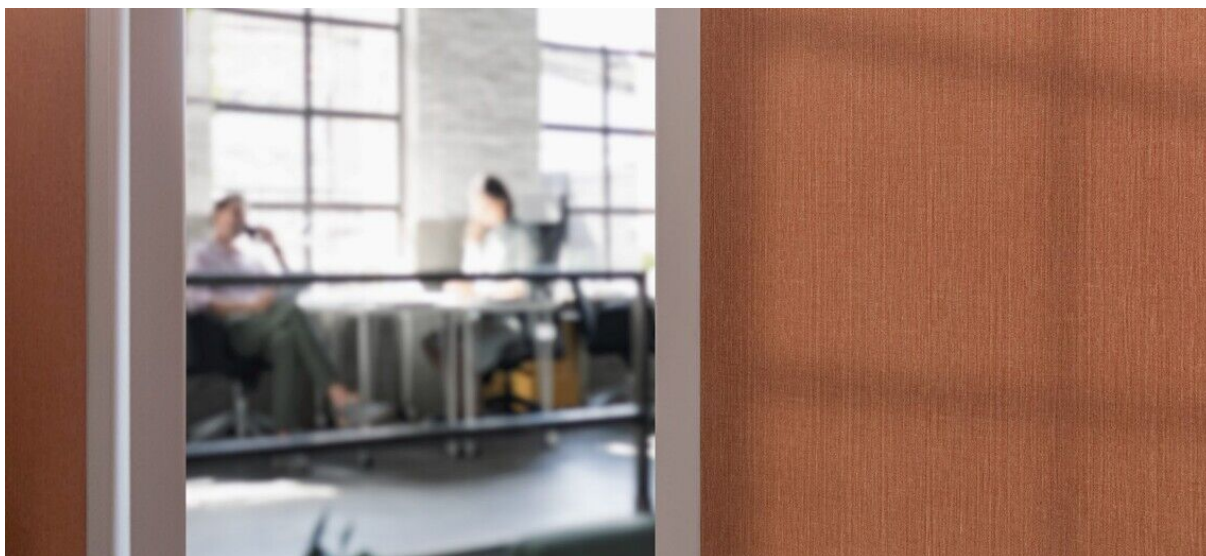


lismore

1097.01 - 1097.30



collezione
**wallcovering
vinyl**

descrizione
raffinato effetto lino

composizione
**tessuto in puro cotone con spalmatura di
monomeri vinilici completamente
polimerizzati, stampato con inchiostri a base
acquosa**

altezza
± 130 cm, ± 51 inches

peso
± 350 gr/m², ± 15 oz/yd¹

assorbimento del suono
ISO 354, alphaw 0.10

resistenza al fuoco
**EN 13501, B s1 d0
IMO 2010 FTP part 2-5
ASTM E84, A**

resistenza alla luce
ISO 105-B02
chiaro 8 / scuro 8 (scala 1 – 8)
CCC-W-408D

permeabilità al vapore acqueo
ISO 15106-3 / EN ISO 12572
Sd value ± 9 m



vinyl COMMITTED TO
SUSTAINABLE DEVELOPMENT

CE EN 15102



lismore

1097.01 - 1097.30



1097.01



1097.02



1097.03



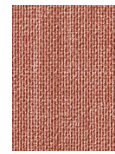
1097.04



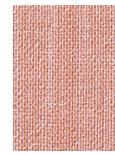
1097.05



1097.06



1097.07



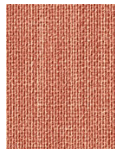
1097.08



1097.09



1097.10



1097.11



1097.12



1097.13



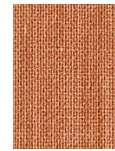
1097.14



1097.15



1097.16



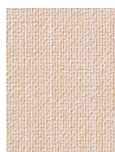
1097.17



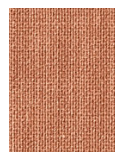
1097.18



1097.19



1097.20



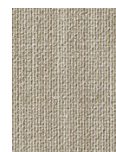
1097.21



1097.22



1097.23



1097.24



1097.25



1097.26



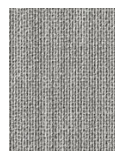
1097.27



1097.28



1097.29



1097.30