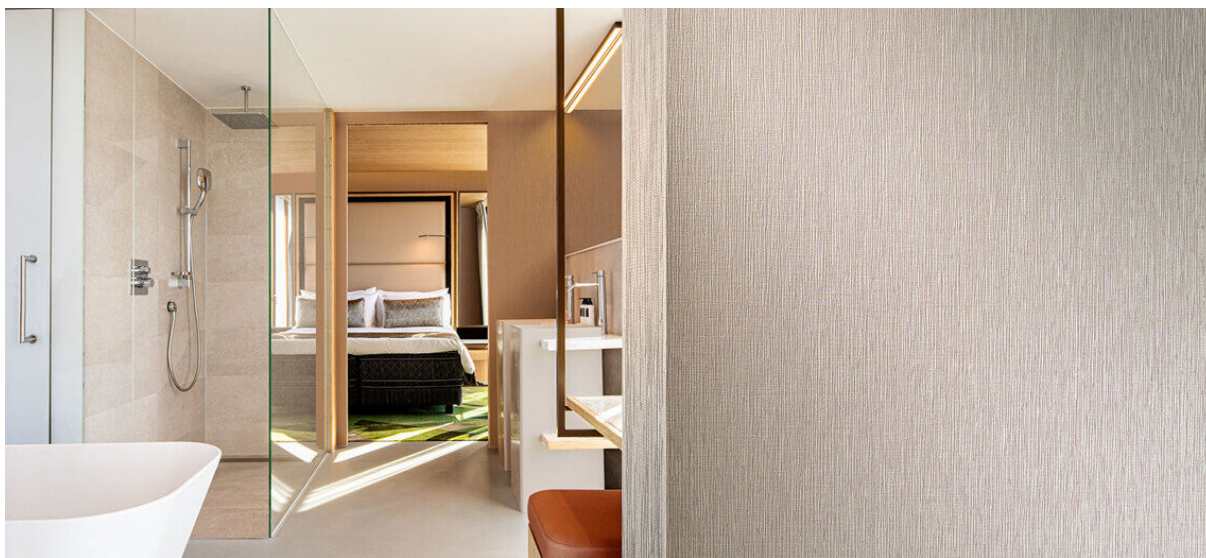


wutai

1105.01 - 1105.14



collezione
wallcovering
vinyl

descrizione
**venatura verticale opaca ispirata alla
corteccia del legno, in tonalità naturali**

composizione
**tessuto in puro cotone con spalmatura di
monomeri vinilici completamente
polimerizzati, stampato con inchiostri a base
acquosa**

altezza
± 130 cm, ± 51 inches

peso
± 550 gr/m², ± 23 oz/yd¹

resistenza al fuoco
**EN 13501, B s2 d0
ASTM E84, A
NFPA 286**

resistenza alla luce
**ISO 105-B02
8 (scale 1-8)
CCC-W-408D**

type II

permeabilità al vapore acqueo
**ISO 15106-3 / EN ISO 12572
Sd value ± 9,5 m**

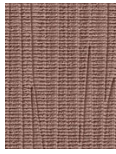
vinyl
COMMITTED TO
SUSTAINABLE DEVELOPMENT

CE EN 15102



wutai

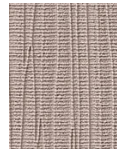
1105.01 - 1105.14



1105.01



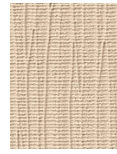
1105.02



1105.03



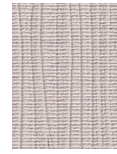
1105.04



1105.05



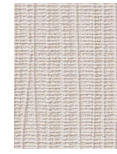
1105.06



1105.07



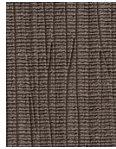
1105.08



1105.09



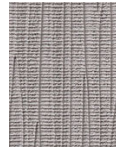
1105.10



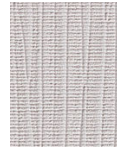
1105.11



1105.12



1105.13



1105.14