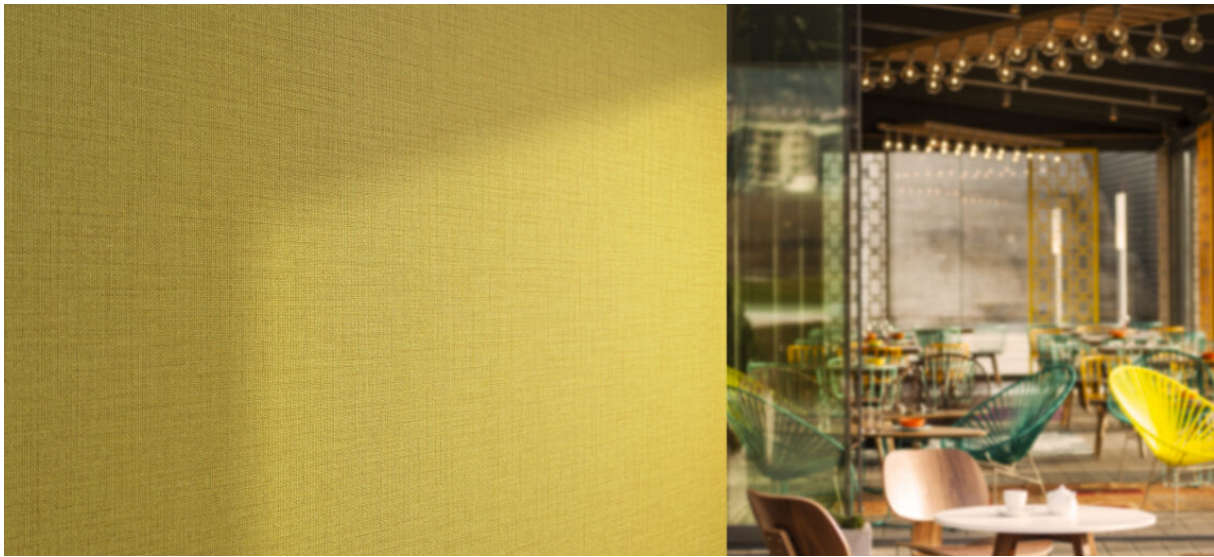


silā

1109.01 - 1109.25



collezione
**wallcovering
vinyl**

descrizione
**struttura effetto lino con leggere striature e
delicata luminosità**

composizione
**tessuto in puro cotone con spalmatura di
monomeri vinilici completamente
polimerizzati, stampato con inchiostri a base
acquosa**

altezza
± 130 cm, ± 51 inches

peso
± 350 gr/m², ± 15 oz/yd¹

assorbimento del suono
ISO 354
alphaw 0.10
ASTM C423
nrc 0.10

resistenza al fuoco
EN 13501, B s1 d0
ASTM E84, A
IMO 2010 FTP part 2-5

resistenza alla luce
ISO 105-B02
7 (scale 1-8)
CCC-W-408D
type II

permeabilità al vapore acqueo
ISO 15106-3 / EN ISO 12572
Sd value ± 9 m



vinyl 
COMMITTED TO
SUSTAINABLE DEVELOPMENT

CE EN 15102

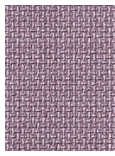


sila

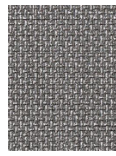
1109.01 - 1109.25



1109.01



1109.02



1109.03



1109.04



1109.05



1109.06



1109.07



1109.08



1109.09



1109.10



1109.11



1109.12



1109.13



1109.14



1109.15



1109.16



1109.17



1109.18



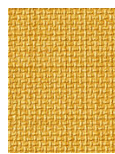
1109.19



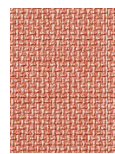
1109.20



1109.21



1109.22



1109.23



1109.24



1109.25