

kilby

1113.01 - 1113.33



collezione
wallcovering
vinyl

permeabilità al vapore acqueo
ISO 15106-3 / EN ISO 12572
Sd value ± 9 m

descrizione
struttura opaca effetto lino duo-tone

composizione
**tessuto in puro cotone con spalmatura di
monomeri vinilici completamente
polimerizzati, stampato con inchiostri a base
acquosa**

altezza
 ± 130 cm, ± 51 inches

peso
 ± 350 gr/m², ± 15 oz/yd¹

assorbimento del suono
ISO 354

alphaw 0.10
ASTM C423
nrc 0.10

resistenza al fuoco
EN 13501, B s1 d0
IMO 2010 FTP part 2-5
ASTM E84, A
NFPA 286

resistenza alla luce
ISO 105-B02
8 (scala 1-8)
CCC-W-408D
type II



vinyl 
COMMITTED TO
SUSTAINABLE DEVELOPMENT

CE EN 15102



kilby

1113.01 - 1113.33



1113.01



1113.02



1113.03



1113.04



1113.05



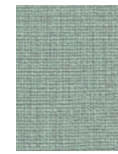
1113.06



1113.07



1113.08



1113.09



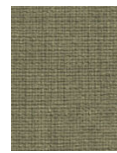
1113.10



1113.11



1113.12



1113.13



1113.14



1113.15



1113.16



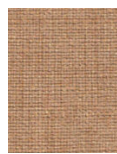
1113.17



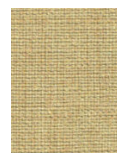
1113.18



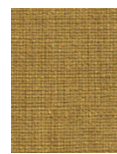
1113.19



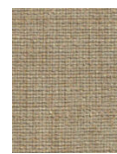
1113.20



1113.21



1113.22



1113.23



1113.24



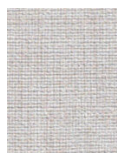
1113.25



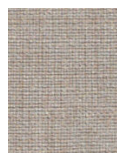
1113.26



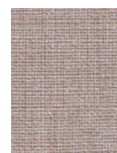
1113.27



1113.28



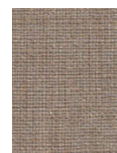
1113.29



1113.30



1113.31



1113.32



1113.33