

moon

1115.01 - 1115.09



collezione
wallcovering
vinyl

descrizione
rivestimento murale in vinile riciclato ispirato a superfici irregolari come pietra e argilla, in tonalità opache, terrose o delicatamente metalliche

composizione
rivestimento murale vinilico con contenuto riciclato del 13% su un supporto in cotone

altezza
± 130 cm, ± 51 inches

peso
± 490 gr/m², ± 21 oz/yd¹

resistenza al fuoco
**EN 13501, B s2 d0
ASTM E84, A**

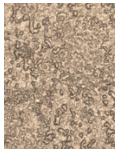
resistenza alla luce
**ISO 105-B02
7-8 (scala 1-8)**

permeabilità al vapore acqueo
**ISO 15106-3 / EN ISO 12572
Sd value ± 9 m**



moon

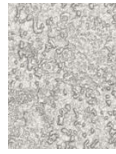
1115.01 - 1115.09



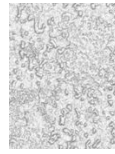
1115.01



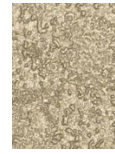
1115.02



1115.03



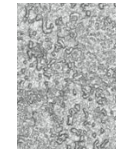
1115.04



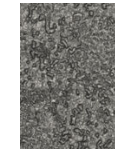
1115.05



1115.06



1115.07



1115.08



1115.09