

# dolin

8048.01 - 8048.09



collectie  
**curtain**

omschrijving  
**licht gestructureerde melange**

samenstelling  
**100% brandvertragend polyester**

breedte  
**± 140 cm, ± 55 inches**

gewicht  
**± 407 gr/m<sup>1</sup>, ± 13 oz/yd<sup>1</sup> fabrics**

geluidsabsorptie  
**ISO 354**  
alphaw 0.85 (pleated)

visueel & thermisch comfort  
**EN 410/EN 14501**

brandwerendheid  
**EN 13773, class 1**  
**BS 5867-2, type C**  
**NF P 92/503-507, M1**  
**DIN 4102, B1**  
**UNI VF 8456-8457, classe 1**  
**IMO 2010 FTP part 7**  
**NFPA 701**  
**CAN ULC S109**

wrijfchtheid  
**ISO 105-X12**  
nat 4-5 / droog 4-5 (schaal 1-5)  
**AATCC 8**  
nat 5 / droog 5 (schaal 1-5)

lichtechtheid  
**ISO 105-B02**  
6 (schaal 1-8)  
**AATCC 16.3: 60 hrs**  
5 (schaal 1-5)

naadschuifweerstand  
**ISO 13936-2**  
ketting 5.5 mm / inslag 4.7 mm  
**ASTM D434**  
ketting 32 lbs / inslag 30 lbs

onderhoud



**krimp: ketting -2% / inslag -1%**



**krimp: ketting -2.8% / inslag -2%**



STANDARD  
100  
S07-0023  
Hohenstein HTTI



Universität Wien  
Institut für Textiltechnologie  
Textilforschungszentrum

# dolin

8048.01 - 8048.09

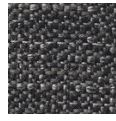
---



8048.01



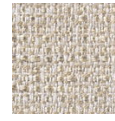
8048.02



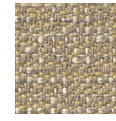
8048.03



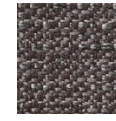
8048.04



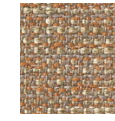
8048.05



8048.06



8048.07



8048.08



8048.09