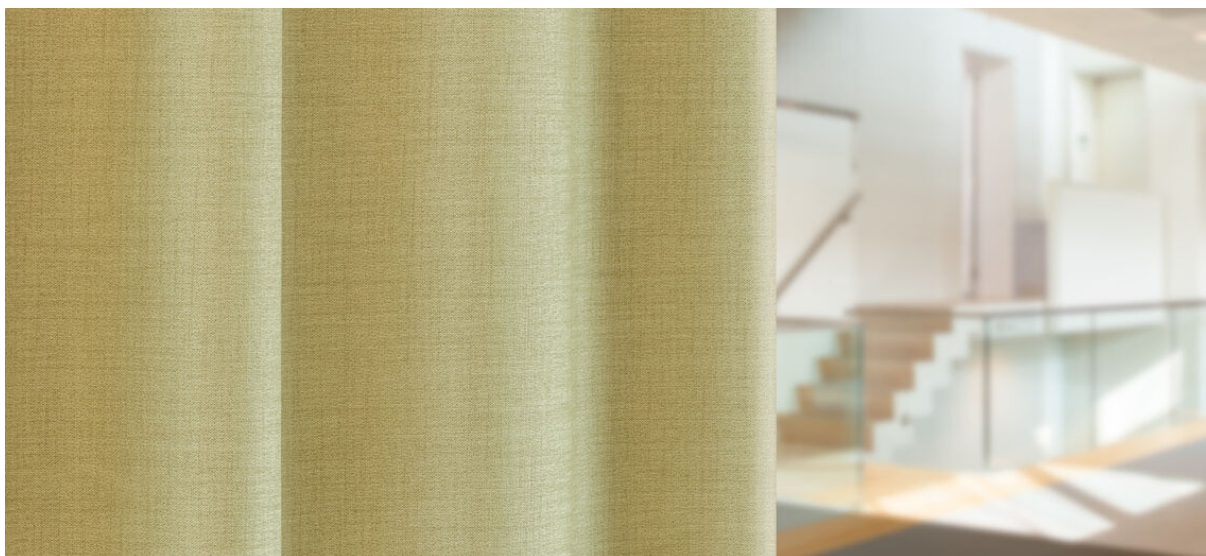


# rani

8067.01 - 8067.22



collectie  
**curtain**

omschrijving  
**weefstructuur met linnen look, dim out**

samenstelling  
**100% brandvertragend polyester**

breedte  
**± 294 cm, ± 116 inches**

gewicht  
**± 861 gr/m<sup>1</sup>, ± 28 oz/yd<sup>1</sup> fabrics**

visueel & thermisch comfort  
**EN 410/EN 14501  
AATCC 148**

brandwerendheid  
**EN 13773, class 1  
BS 5867-2, type C  
NF P 92/503-507, M1  
DIN 4102, B1  
UNI VF 8456-8457, classe 1  
NFPA 701  
CAN/ULC S109  
IMO 2010 FTP part 7**

wrijftechtheid  
**ISO 105-X12**  
nat 4-5 / droog 4-5 (schaal 1-5)  
**AATCC 8**  
nat 5 / droog 5 (schaal 1-5)

lichtechtheid  
**ISO 105-B02**  
5 (schaal 1-8)  
**AATCC 16.3: 60 hours**  
2.5 (schaal 1-5)

naadschuifweerstand  
**ASTM D434**  
warp 53.5 lbs / weft 48 lbs

onderhoud



**krimp: ketting -0.8% / inslag -0.4%**



**krimp: ketting -1.6% / inslag -0.7%**



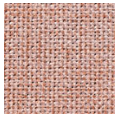
STANDARD  
100  
S07-0023  
Hohenstein HTTI



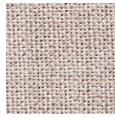
# rani

8067.01 - 8067.22

---



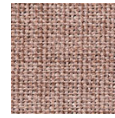
8067.01



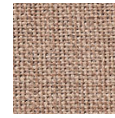
8067.02



8067.03



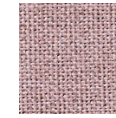
8067.04



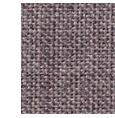
8067.05



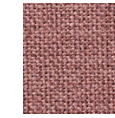
8067.06



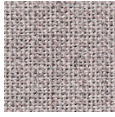
8067.07



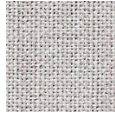
8067.08



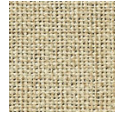
8067.09



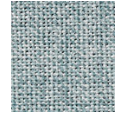
8067.10



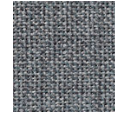
8067.11



8067.12



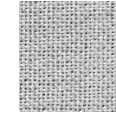
8067.13



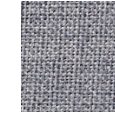
8067.14



8067.15



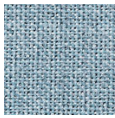
8067.16



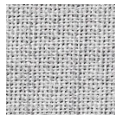
8067.17



8067.18



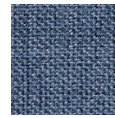
8067.19



8067.20



8067.21



8067.22