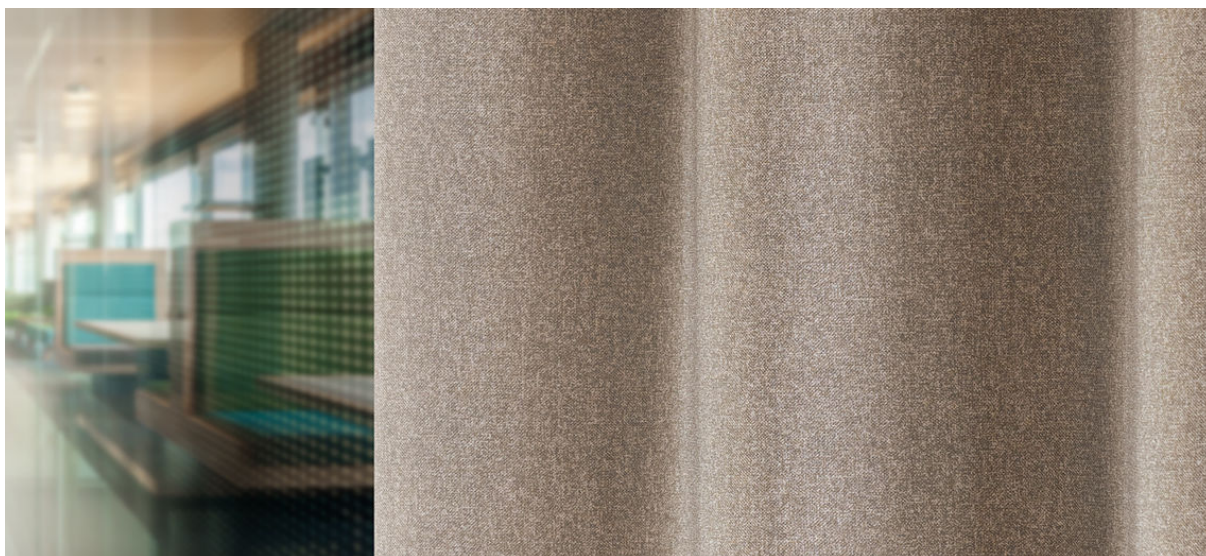


elba

8069.01 - 8069.20

black  
out

binder

**curtain 02**

omschrijving

**black out met gerasterde melange look**

samenstelling

**100% flame retardant polyester acrylic coating**

breedte

**± 277 cm, ± 109 inches**

gewicht

**± 1075 gr/m<sup>1</sup>, ± 35 oz/yd<sup>1</sup> fabrics**

thermisch &amp; visueel comfort

**EN 14501**

class 4 (schaal 1-4)

**AATCC 148**

100% light blocked

brandwerendheid

**EN 13773, class 1****BS 5867-2, type B****DIN 4102, B1****UNI VF 8456-8457, classe 1****NFPA 701****CAN/ULC S109****IMO 2010 FTP part 7**

wrijfechtheid

**ISO 105-X12**

nat 4-5 / droog 4-5 (schaal 1-5)

**AATCC 8**

nat 5 / droog 5 (schaal 1-5)

lichtechtheid

**ISO 105-B02**

5 (schaal 1-8)

**AATCC 16.3: 60 hours**

2.5 (schaal 1-5)

naadschuifweerstand

**ASTM D434**

warp 44 lbs / weft 49.5 lbs

onderhoud

**krimp: ketting -0.9% / inslag -0.6%****krimp: ketting -1.5% / inslag -1.2%**

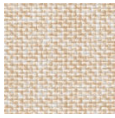


Hochschule Niederrhein  
University of Applied Sciences

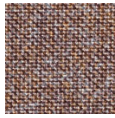
# elba

8069.01 - 8069.20

---



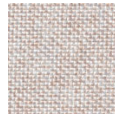
8069.01



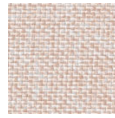
8069.02



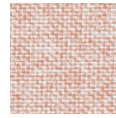
8069.03



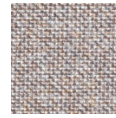
8069.04



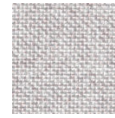
8069.05



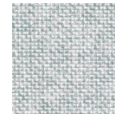
8069.06



8069.07



8069.08



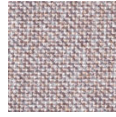
8069.09



8069.10



8069.11



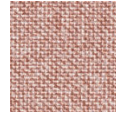
8069.12



8069.13



8069.14



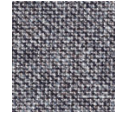
8069.15



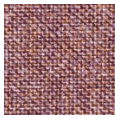
8069.16



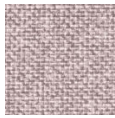
8069.17



8069.18



8069.19



8069.20