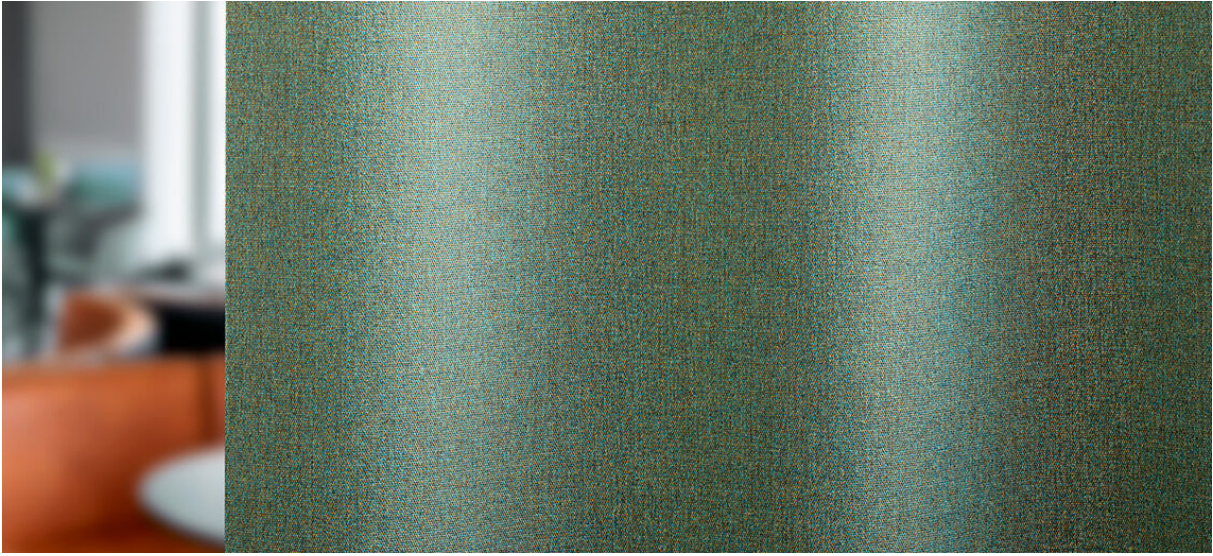


# tula

8081.01 - 8081.16



binder

**curtain 01**

omschrijving

**subtiel gekleurde melange structuur in een droge, wollige look en feel**

samenstelling

**100% brandvertragend polyester**

breedte

**± 149 cm, ± 59 inches**

gewicht

**± 395 gr/m<sup>1</sup>, ± 13 oz/yd<sup>1</sup> fabrics**

visueel & thermisch comfort

**EN 410/EN 14501**

brandwerendheid

**EN 13773, class 1**

**BS 5867-2, type C**

**NF P 92/503-507, M1**

**DIN 4102, B1**

**UNI VF 8456-8457, classe 1**

**IMO 2010 FTP part 7**

**NFPA 701**

**CAN/ULC S109**

wrijftechtheid

**ISO 105-X12**

nat 4-5 / droog 4-5 (schaal 1-5)

**AATCC 8**

nat 5 / droog 5 (schaal 1-5)

lichtechtheid

**ISO 105-B02**

6 (schaal 1-8)

**AATCC 16.3: 60 hours**

5 (schaal 1-5)

naadschuifweerstand

**ISO 13936-2**

warp 3 mm / weft 4.7 mm

**ASTM D434**

warp 49 lbs / weft 51 lbs

onderhoud



**krimp: ketting: -2% / inslag: -1.6%**



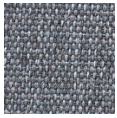
**CONFIDENCE  
IN TEXTILES**  
Tested for harmful substances  
according to Oeko-Tex® Standard 100



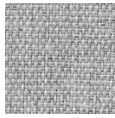
# tula

8081.01 - 8081.16

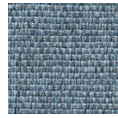
---



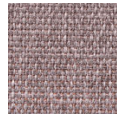
8081.01



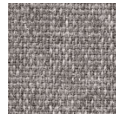
8081.02



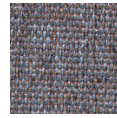
8081.03



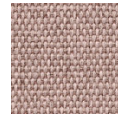
8081.04



8081.05



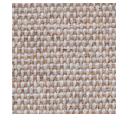
8081.06



8081.07



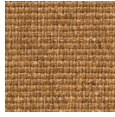
8081.08



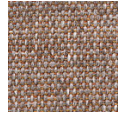
8081.09



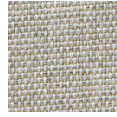
8081.10



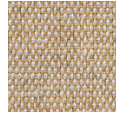
8081.11



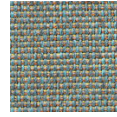
8081.12



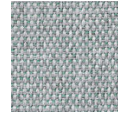
8081.13



8081.14



8081.15



8081.16