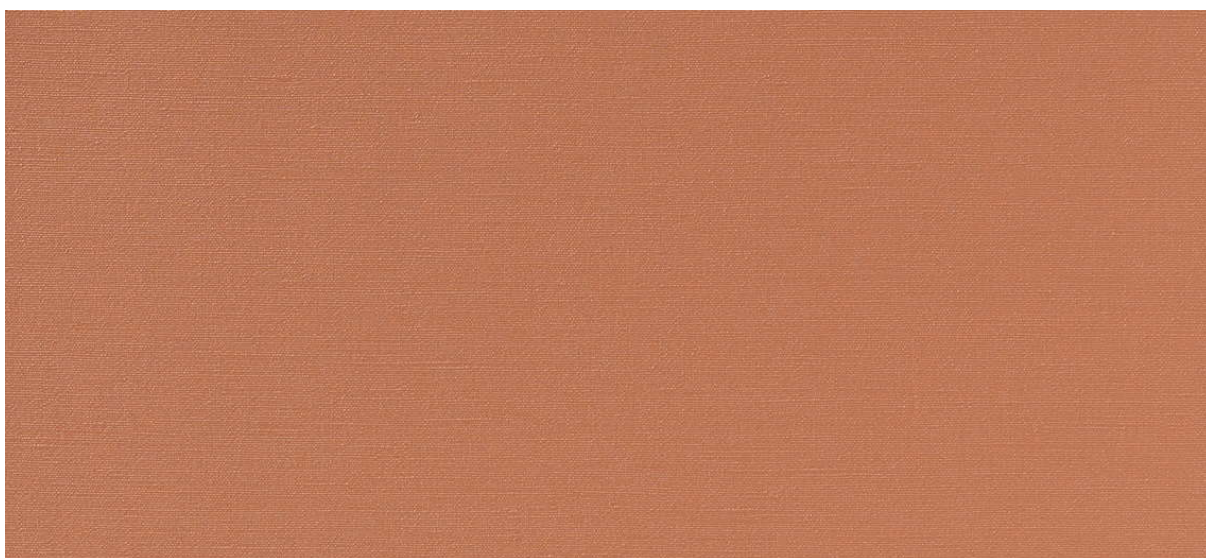


dalma

7024.01 - 7024.22



binder

upholstery

03

vinyl

omschrijving

structuur van zijdeweefsel

samenstelling

geschuimde vinyl, gebreide

katoen/polyester backing

breedte

± 140 cm, ± 55 inches

gewicht

backing: ± 110 gr/m², ± 5 oz/yd¹

coating: ± 690 gr/m², ± 31 oz/yd¹

dikte

1.1 mm, 0.04 inches

rollengte

± 20 meter, ± 22 yards

brandwerendheid

EN 1021/1-2

BS 5852, crib 5

NF P 92/503 - 507, M2

NF D60-013 (AM 18)

DIN 4102, B2

UNI 9175, classe 1 IM

Cal TB 117

NFPA 260, class 1

IMO 2010 FTP part 8

slijtvastheid

ISO 12947-2

> 300.000 rubs martindale

ASTM D4157

100.000 double rubs wyzenbeek

wrijftechtheid

ISO 105-X12

wet 5 / dry 5 (scale 1-5)

AATCC 8

wet 5 / dry 5 (scale 1-5)

lichtechtheid

ISO 105-B02

8 (scale 1-8)

ASTM D4329: 150 hours

4 (scale 1-5)

urinebestendigheid

goed

huidvetbestendigheid

goed

treksterkte

ISO 1421

length 475 N / width 320 N

ASTM D2261

length 7.3 lbs / width 9.2 lbs

knikbestendigheid

ISO 5402

> 20.000

hechting aan coating

ASTM D751

length 8.3 lbf / width 5.2 lbf



vinyl  COMMITTED TO SUSTAINABLE DEVELOPMENT

dalma

7024.01 - 7024.22



7024.18



7024.19



7024.21



7024.11



7024.12



7024.05



7024.08



7024.09



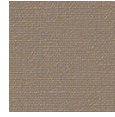
7024.13



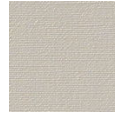
7024.22



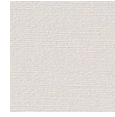
7024.20



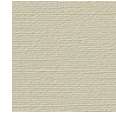
7024.17



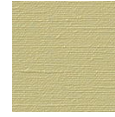
7024.15



7024.14



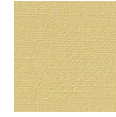
7024.03



7024.02



7024.06



7024.16



7024.10



7024.07



7024.04



7024.01