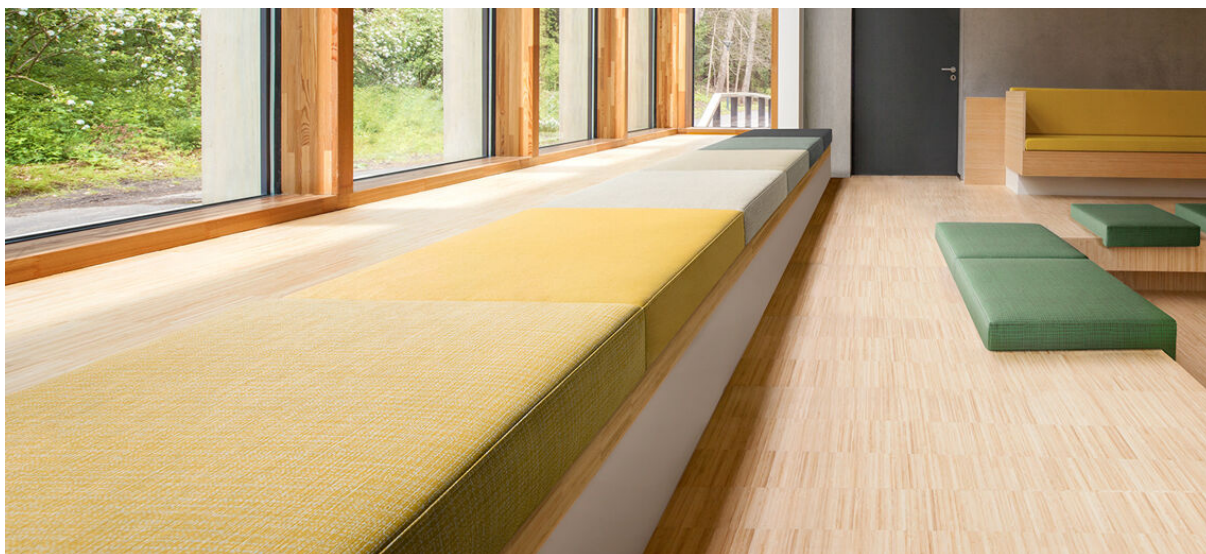


# scott

7045.01 - 7045.18



collectie

**upholstery**  
**vinyl**

omschrijving

**overall beeld gevormd door kleine horizontale en verticale lijntjes**

samenstelling

**geschuimde vinyl, katoen/polyester backing**

breedte

**± 137-140 cm, ± 54-55 inches**

gewicht

**backing: ± 110 gr/m<sup>2</sup>, ± 5 oz/yd<sup>1</sup>**  
**coating: ± 690 gr/m<sup>2</sup>, ± 31 oz/yd<sup>1</sup>**

dikte

**1.1 mm, 0.04 inches**

brandwerendheid

**EN 1021/1-2**

**BS 5852, crib 5**

**NF P 92/503 - 507, M2**

**NF D60-013 (AM 18)**

**DIN 4102, B2**

**UNI 9175, classe 1 IM**

**Cal TB 117**

**NFPA 260, class 1**

**IMO 2010 FTP part 8**

slijtvastheid

**ISO 12947-2**

> 300.000 rubs martindale

**ASTM D4157**

100.000 double rubs wyzenbeek

wrijftechtheid

**ISO 105-X12**

wet 5 / dry 5 (scale 1-5)

**AATCC 8**

wet 5 / dry 5 (scale 1-5)

lichtechtheid

**ISO 105-B02**

7 (scale 1-8)

**ASTM D4329: 150 hours**

4 (scale 1-5)

weerstand tegen bloed, urine, zweet en huidvet

**EN 12720**

5 (scale 1-5)

treksterkte

**ISO 1421**

length 470 N / width 313 N

**ASTM D2261**

length 7.3 lbs / width 9.2 lbs

knikbestendigheid

**ISO 7854**

400.000 cycles

hechting aan coating

**ASTM D751**

length 8.3 lbf / width 5.2 lbf

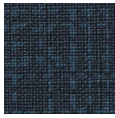


**vinyl**   
COMMITTED TO  
SUSTAINABLE DEVELOPMENT

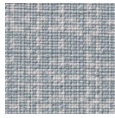
# scott

7045.01 - 7045.18

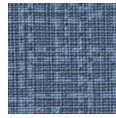
---



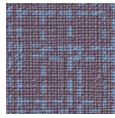
7045.01



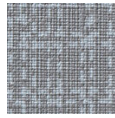
7045.02



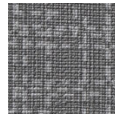
7045.03



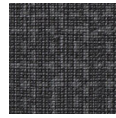
7045.04



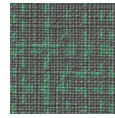
7045.05



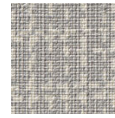
7045.06



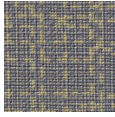
7045.07



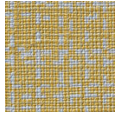
7045.08



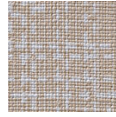
7045.09



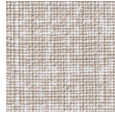
7045.10



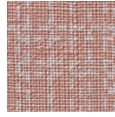
7045.11



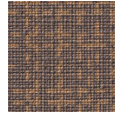
7045.12



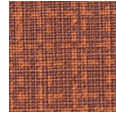
7045.13



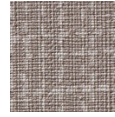
7045.14



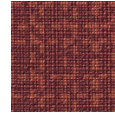
7045.15



7045.16



7045.17



7045.18