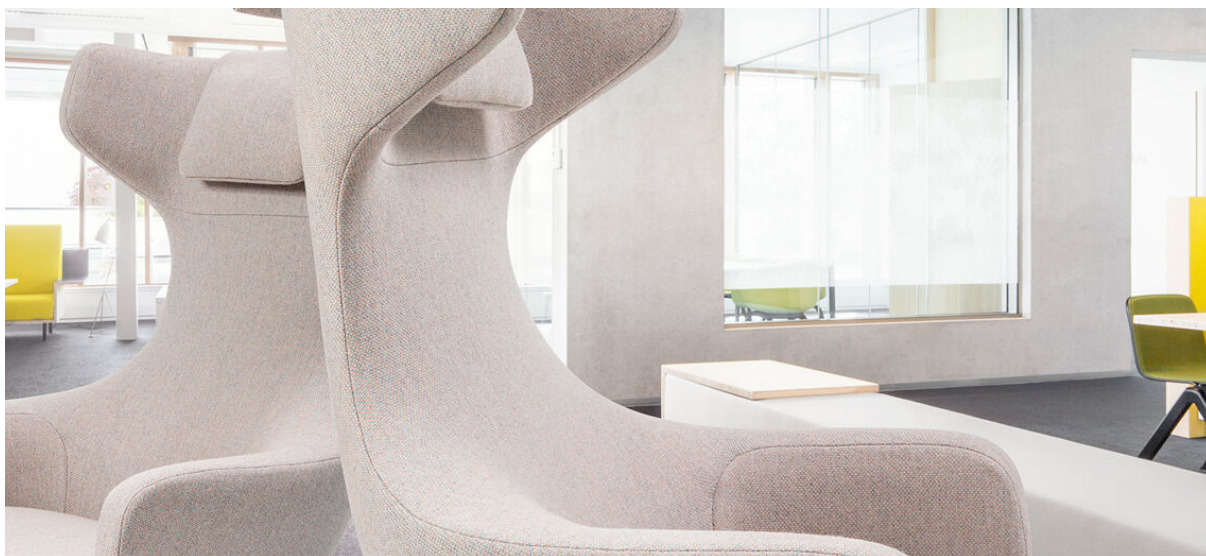


# lamu

7051.01 - 7051.30



collectie

**upholstery**

**textile**

omschrijving

**viltlen wolkwaliteit met structuur**

samenstelling

**75% post-consumer recycled wol / 25% polyester**

breedte

**± 150 cm, ± 59 inches**

gewicht

**± 660 gr/m<sup>2</sup>, ± 21 oz/yd<sup>2</sup> fabrics**

brandwerendheid

**EN 1021/1-2**

**BS 5852, crib 5**

**NF P 92/503-507, M2**

**DIN 4102, B2**

**IMO 2010 FTP part 8**

**UNI 9175, classe 1 IM**

**Cal TB 117**

**NFPA 260, class 1**

slijtvastheid

**ISO 12947-2**

>100.000 rubs martindale

**ASTM D4157**

>30.000 double rubs wyzenbeek

pilling

**ISO 12945-2**

4 (schaal 1-5)

**ASTM D3511**

3 (schaal 1-5)

wrijftechtheid

**ISO 105-X12**

nat 5 / droog 5 (schaal 1-5)

**AATCC 8**

nat 5 / droog 5 (schaal 1-5)

lichtechtheid

**ISO 105-B02**

5 (schaal 1-8)

**AATCC 16.3: 40 hours**

5 (schaal 1-5)

naadschuifweerstand

**ISO 13936 - 2**

ketting 3.5 mm / inslag 3.5 mm

**ASTM D4034**

ketting 26 lbf / inslag 26 lbf

treksterkte

**ASTM D5034**

warp 73 lbs / weft 76 lbs

onderhoud





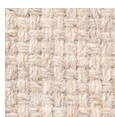
STANDARD  
100

S19-3058  
Hohenstein HTTI

# lamu

7051.01 - 7051.30

---



7051.01



7051.02



7051.03



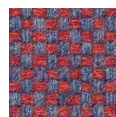
7051.04



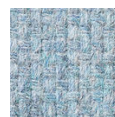
7051.05



7051.06



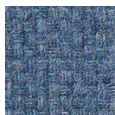
7051.07



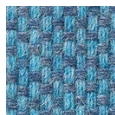
7051.08



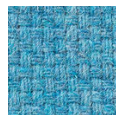
7051.09



7051.10



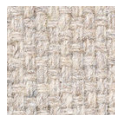
7051.11



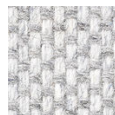
7051.12



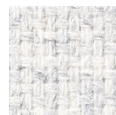
7051.13



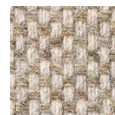
7051.14



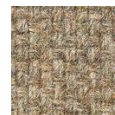
7051.15



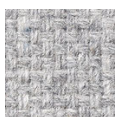
7051.16



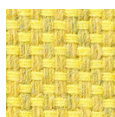
7051.17



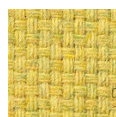
7051.18



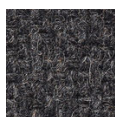
7051.19



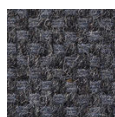
7051.20



7051.21



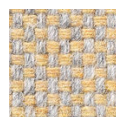
7051.22



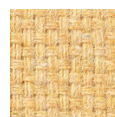
7051.23



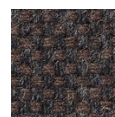
7051.24



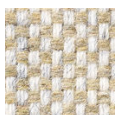
7051.25



7051.26



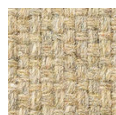
7051.27



7051.28



7051.29



7051.30