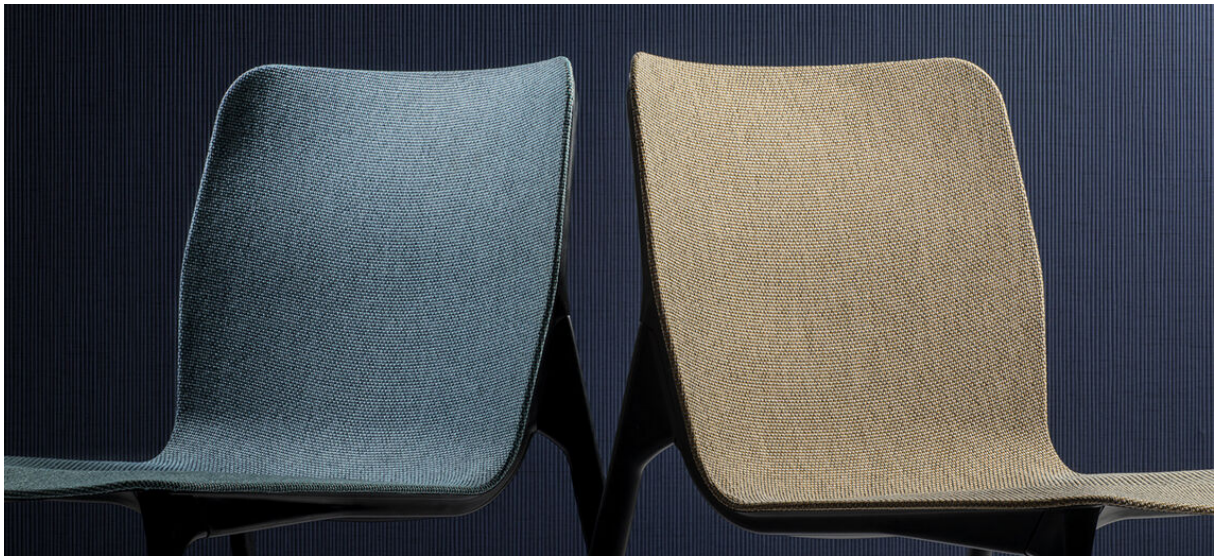


hestan

7035.01 - 7035.30



collectie

**upholstery
textile**

omschrijving

een grof semi-uni weefsel

samenstelling

**> 37% recycled polyester FR / < 63%
polyester FR**

breedte

± 140 cm, ± 55 inches

gewicht

± 570 gr/m¹, ± 18 oz/yd¹ fabrics

brandwerendheid

EN 1021/ 1- 2

BS 5852, crib 5

NF P 92 / 503 - 507, M1

DIN 4102, B1

IMO 2010 FTP part 8

UNI 9175, classe 1 IM

Cal TB 117

slijtvastheid

ISO 12947-2

60.000 rubs martindale

ASTM D4157

100.000 double rubs wyzenbeek

pilling

ISO 12945-2

4-5 (schaal 1-5)

ASTM D3511

4-5 (schaal 1-5)

wrijfechtheid

ISO 105-X12

nat 4-5 / droog 4-5 (schaal 1-5)

AATCC 8

nat 5 / droog 5 (schaal 1-5)

lichtechtheid

ISO 105-B02

6 (schaal 1-8)

AATCC 16.3: 40 hours

5 (schaal 1-5)

naadschuifweerstand

ISO 13936 - 2

ketting 2.7 mm / inslag 2.7 mm

ASTM D4034

ketting 83 lbf / inslag 91 lbf

treksterkte

ASTM D5034

warp 353 lbs / weft 377 lbs

onderhoud



krimp: ketting -1.5% / inslag -1.5%



krimp: ketting -2.9% / inslag -3.0%



STANDARD
100

S07-0023
Hohenstein HTTI

hestan

7035.01 - 7035.30



7035.01



7035.02



7035.03



7035.04



7035.05



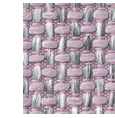
7035.06



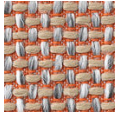
7035.07



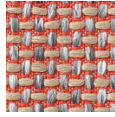
7035.08



7035.09



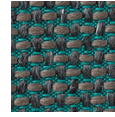
7035.10



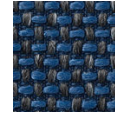
7035.11



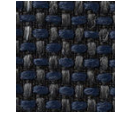
7035.12



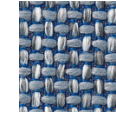
7035.13



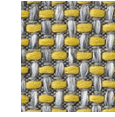
7035.14



7035.15



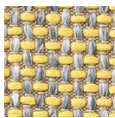
7035.16



7035.17



7035.18



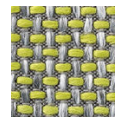
7035.19



7035.20



7035.21



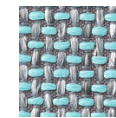
7035.22



7035.23



7035.24



7035.25



7035.26



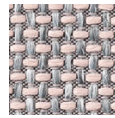
7035.27



7035.28



7035.29



7035.30