

fuga

7047.01 - 7047.26



collectie

**upholstery
textile**

omschrijving

**tweekleurige geweven chenille in
hedendaagse kleuren**

samenstelling

**79% recycled polyester FR / 21% polyester
FR**

breedte

± 135 cm, ± 53 inches

gewicht

± 807 gr/m¹, ± 26 oz/yd¹ fabrics

brandwerendheid

EN 1021/ 1- 2

BS 5852, crib 5

NF P 92 / 503 - 507, M1

DIN 4102, B1

IMO 2010 FTP part 8

UNI 9175, classe 1 IM

Cal TB 117

NFPA 260, class 1

slijtvastheid

ISO 12947-2

75.000 rubs martindale

ASTM D4157

40.000 double rubs wyzenbeek

pilling

ISO 12945-2

4-5 (schaal 1-5)

ASTM D3511

5 (schaal 1-5)

wrijftechtheid

ISO 105-X12

nat 4-5 / droog 4-5 (schaal 1-5)

AATCC 8

nat 5 / droog 5 (schaal 1-5)

lichtechtheid

ISO 105-B02

6-7 (schaal 1-8)

AATCC 16.3: 40 hours

5 (schaal 1-5)

naadschuifweerstand

ISO 13936-2

ketting 4.7 mm / inslag 3 mm

ASTM D4034

ketting 41 lbf / inslag 100 lbf

treksterkte

ASTM D5034

warp 167 lbs / weft 378 lbs

onderhoud



krimp: ketting -1.6% / inslag -1.6%



krimp: ketting -1.0% / inslag -3.1%

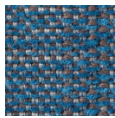


STANDARD
100

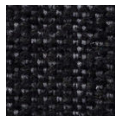
S07-0023
Hohenstein HTTI

fuga

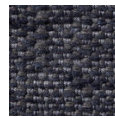
7047.01 - 7047.26



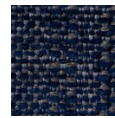
7047.01



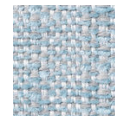
7047.02



7047.03



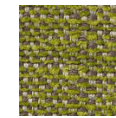
7047.04



7047.05



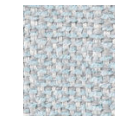
7047.06



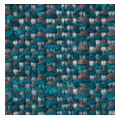
7047.07



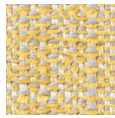
7047.08



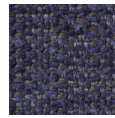
7047.09



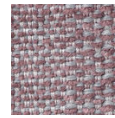
7047.10



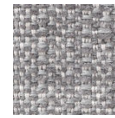
7047.11



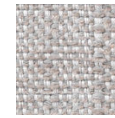
7047.12



7047.13



7047.14



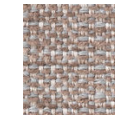
7047.15



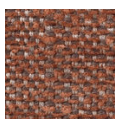
7047.16



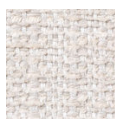
7047.17



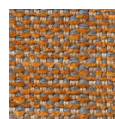
7047.18



7047.19



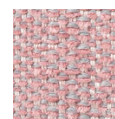
7047.20



7047.21



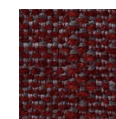
7047.22



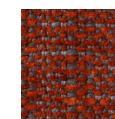
7047.23



7047.24



7047.25



7047.26