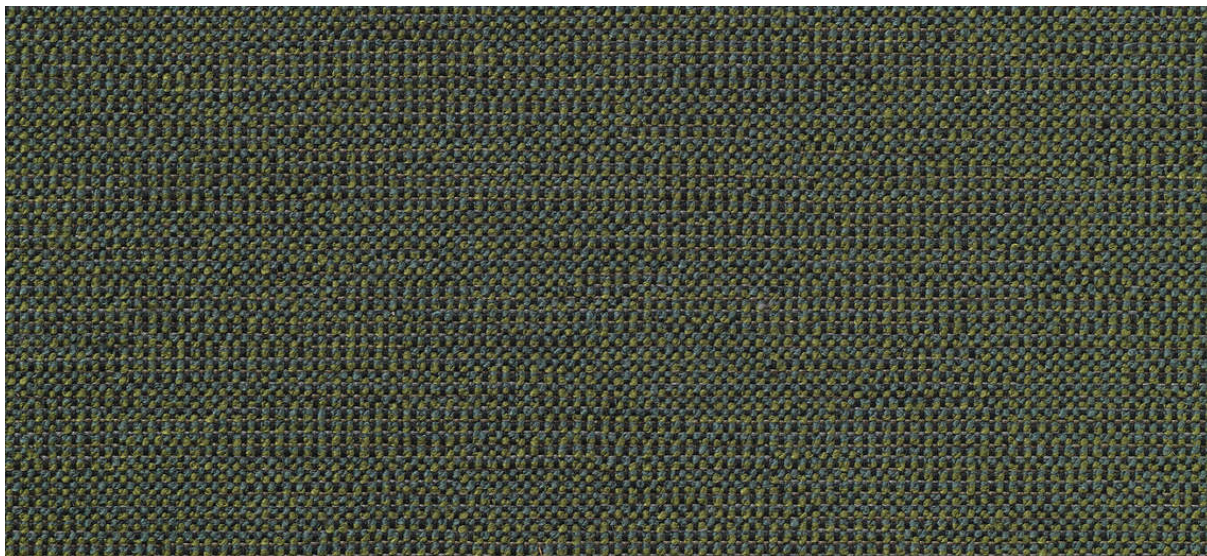


eliot

7046.01 - 7046.18



binder

upholstery 02

omschrijving

fijne gestructureerde bouclé meubelstof in frisse kleuren

samenstelling

100% brandvertragend polyester

breedte

± 137 cm, ± 54 inches

gewicht

± 708 gr/m¹, ± 23 oz/yd¹ fabrics

brandwerendheid

EN 1021/ 1-2

BS 5852, crib 5

NF P 92 / 503 - 507, M1

DIN 4102, B1

UNI 9175, classe 1 IM

Cal TB 117

NFPA 260, class 1

IMO 2010 FTP part 8

slijtvastheid

ISO 12947-2

110.000 rubs martindale

ASTM D4157

100.000 double rubs wyzenbeek

pilling

ISO 12945-2

4 (schaal 1-5)

ASTM D3511

4 (schaal 1-5)

wrijftechtheid

ISO 105-X12

nat 4 - 5 / droog 4 - 5 (schaal 1-5)

AATCC 8

nat 5 / droog 5 (schaal 1-5)

lichtechtheid

ISO 105-B02

6 (schaal 1-8)

AATCC 16.3: 40 hours

5 (schaal 1-5)

naadschuifweerstand

ISO 13936 - 2

ketting 4.7 mm / inslag 3 mm

ASTM D4034

ketting 77 lbs / inslag 115 lbs

treksterkte

ASTM D5034

warp 195 lbs / weft 329 lbs

onderhoud



krimp: ketting -0.7% / inslag -1.1%



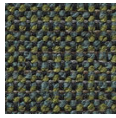
krimp: ketting -1.6% / inslag -2.4%



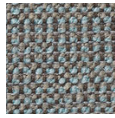
**CONFIDENCE
IN TEXTILES**
Tested for harmful substances
according to Oeko-Tex® Standard 100

eliot

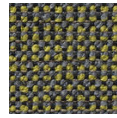
7046.01 - 7046.18



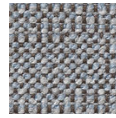
7046.01



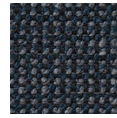
7046.02



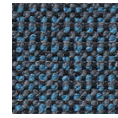
7046.03



7046.04



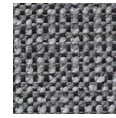
7046.05



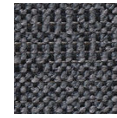
7046.06



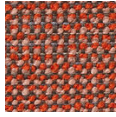
7046.07



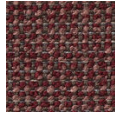
7046.08



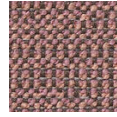
7046.09



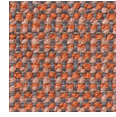
7046.10



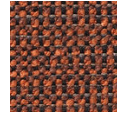
7046.11



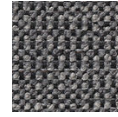
7046.12



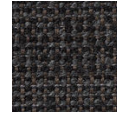
7046.13



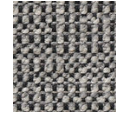
7046.14



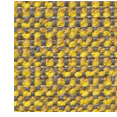
7046.15



7046.16



7046.17



7046.18