

# burton

7056.01 - 7056.23



collectie

**upholstery  
textile**

omschrijving

**tweekleurig geweven uni met melange effect**

samenstelling

**100% brandvertragend polyester**

breedte

**± 140 cm, ± 55 inches**

gewicht

**± 763 gr/m<sup>1</sup>, ± 25 oz/yd<sup>1</sup> fabrics**

brandwerendheid

**EN 1021/ 1-2**

**BS 5852, crib 5**

**NF P 92 / 503 - 507, M1**

**DIN 4102, B1**

**UNI 9175, classe 1 IM**

**Cal TB 117**

**NFPA 260, class 1**

**IMO 2010 FTP part 8**

slijtvastheid

**ISO 12947-2**

80.000 rubs martindale

**ASTM D4157**

100.000 double rubs wyzenbeek

pilling

**ISO 12945-2**

4 (schaal 1-5)

**ASTM D3511**

4 (schaal 1-5)

wrijfechtheid

**ISO 105-X12**

nat 4 - 5 / droog 4 - 5 (schaal 1-5)

**AATCC 8**

nat 5 / droog 5 (schaal 1-5)

lichtechtheid

**ISO 105-B02**

6 - 7 (schaal 1-8)

**AATCC 16.3: 40 hours**

4.5 (schaal 1-5)

naadschuifweerstand

**ISO 13936 - 2**

ketting 3 mm / inslag 2.7 mm

**ASTM D4034**

ketting 101 lbs / inslag 107 lbs

treksterkte

**ASTM D5034**

warp 365 lbs / weft 289 lbs

onderhoud



**krimp: ketting -0.7% / inslag -0.6%**



**krimp: ketting -1.8% / inslag -2.2%**



STANDARD  
100

S07-0023  
Hohenstein HTTI

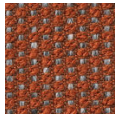
# burton

7056.01 - 7056.23

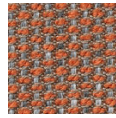
---



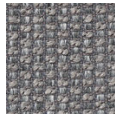
7056.01



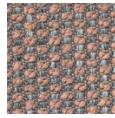
7056.02



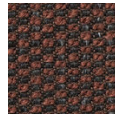
7056.03



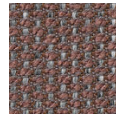
7056.04



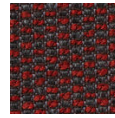
7056.05



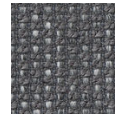
7056.06



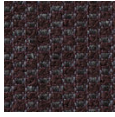
7056.07



7056.08



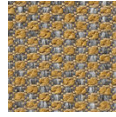
7056.09



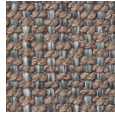
7056.10



7056.11



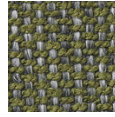
7056.12



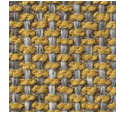
7056.13



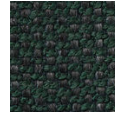
7056.14



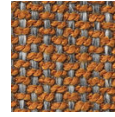
7056.15



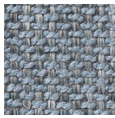
7056.16



7056.17



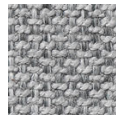
7056.18



7056.19



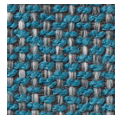
7056.20



7056.21



7056.22



7056.23