

# creek

7053.01 - 7053.22



binder

**upholstery**

**03**

**vinyl**

omschrijving

**driekleurige onregelmatige linnenlook**

samenstelling

**geschuimde vinyl, katoen/polyester backing**

breedte

**± 140 cm, ± 55 inches**

gewicht

**backing: ± 110 gr/m<sup>2</sup>, ± 5 oz/yd<sup>1</sup>**

**coating: ± 690 gr/m<sup>2</sup>, ± 31 oz/yd<sup>1</sup>**

dikte

**1.1 mm, 0.04 inches**

rollengte

**± 20 meter, ± 22 yards**

brandwerendheid

**EN 1021/1-2**

**BS 5852, crib 5**

**NF P 92/503 - 507, M2**

**NF D60-013 (AM 18)**

**DIN 4102, B2**

**UNI 9175, classe 1**

**Cal TB 117**

**NFPA 260, class 1**

**IMO 2010 FTP part 8**

slijtvastheid

**ISO 12947-2**

> 125.000 rubs martindale

**ASTM D4157**

50.000 double rubs wyzenbeek

wrijftechtheid

**ISO 105-X12**

nat 5 / droog 5 (schaal 1-5)

**AATCC 8**

nat 4-5 / droog 4 (schaal 1-5)

lichtechtheid

**ISO 105-B02**

8 (schaal 1-8)

**AATCC 16.3: 40 hours**

5 (schaal 1-5)

urinebestendigheid

**goed**

huidvetbestendigheid

**goed**

treksterkte

**ISO 1421**

lengte 475 N / breedte 320 N

**ASTM D5034**

ketting 113 lbs / inslag 90 lbs

knikbestendigheid

**ISO 5402**

> 20.000

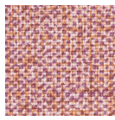


vinyl  COMMITTED TO SUSTAINABLE DEVELOPMENT

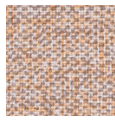
# creek

7053.01 - 7053.22

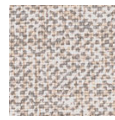
---



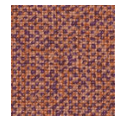
7053.01



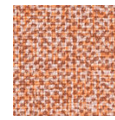
7053.02



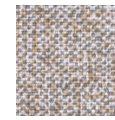
7053.03



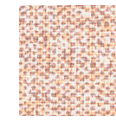
7053.04



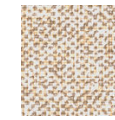
7053.05



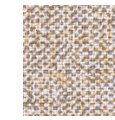
7053.06



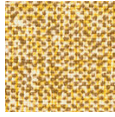
7053.07



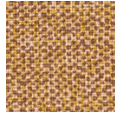
7053.08



7053.09



7053.10



7053.11



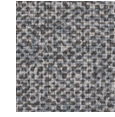
7053.12



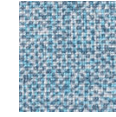
7053.13



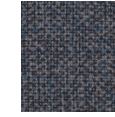
7053.14



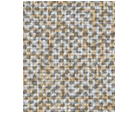
7053.15



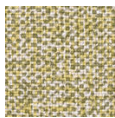
7053.16



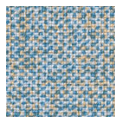
7053.17



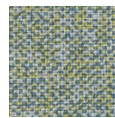
7053.18



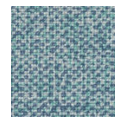
7053.19



7053.20



7053.21



7053.22