

rolla

7065.01 - 7065.20



collectie

**upholstery
textile**

omschrijving

3-dimensionale, stoere, grafische meubelstof

samenstelling

**88% recycled polyester FR / 12% polyester
FR**

breedte

± 140 cm, ± 55 inches

gewicht

± 775 gr/m¹, ± 25 oz/yd¹ fabrics

brandwerendheid

EN 1021/ 1-2

BS 5852, crib 5

NF P 92 / 503 - 507, M1

DIN 4102, B1

UNI 9175, classe 1.IM

Cal TB 117

NFPA 260, class 1

IMO 2010 FTP part 8

slijtvastheid

ISO 12947-2

50.000 rubs martindale

ASTM D4157

100.000 double rubs wyzenbeek

pilling

ISO 12945-2

4 (schaal 1-5)

ASTM D3511

3 (schaal 1-5)

wrijfechtheid

ISO 105-X12

nat 4-5 / droog 4-5 (schaal 1-5)

AATCC 8

nat 5 / droog 4.5 (schaal 1-5)

lichtechtheid

ISO 105-B02

6 (schaal 1-8)

AATCC 16.3: 40 hours

4 (schaal 1-5)

naadschuifweerstand

ISO 13936 - 2

ketting 2.3 mm / inslag 2 mm

ASTM D4034

ketting 102 lbs / inslag 83 lbs

treksterkte

ISO 13934-1

warp 1120 N / weft 2500 N

ASTM D5034

warp 239 lbs / weft 560 lbs

onderhoud



krimp: ketting -2.8% / inslag -2.6%

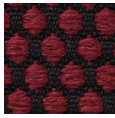


STANDARD
100

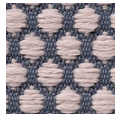
S07-0023
Hohenstein HTTI

rolla

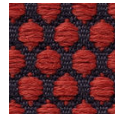
7065.01 - 7065.20



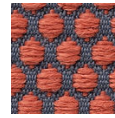
7065.01



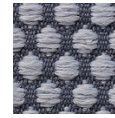
7065.02



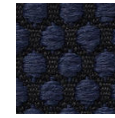
7065.03



7065.04



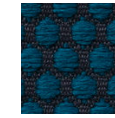
7065.05



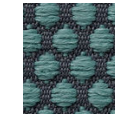
7065.06



7065.07



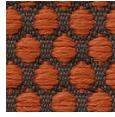
7065.08



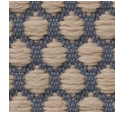
7065.09



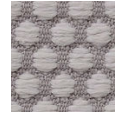
7065.10



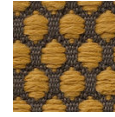
7065.11



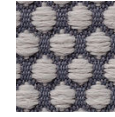
7065.12



7065.13



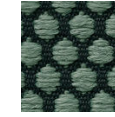
7065.14



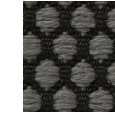
7065.15



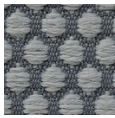
7065.16



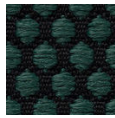
7065.17



7065.18



7065.19



7065.20