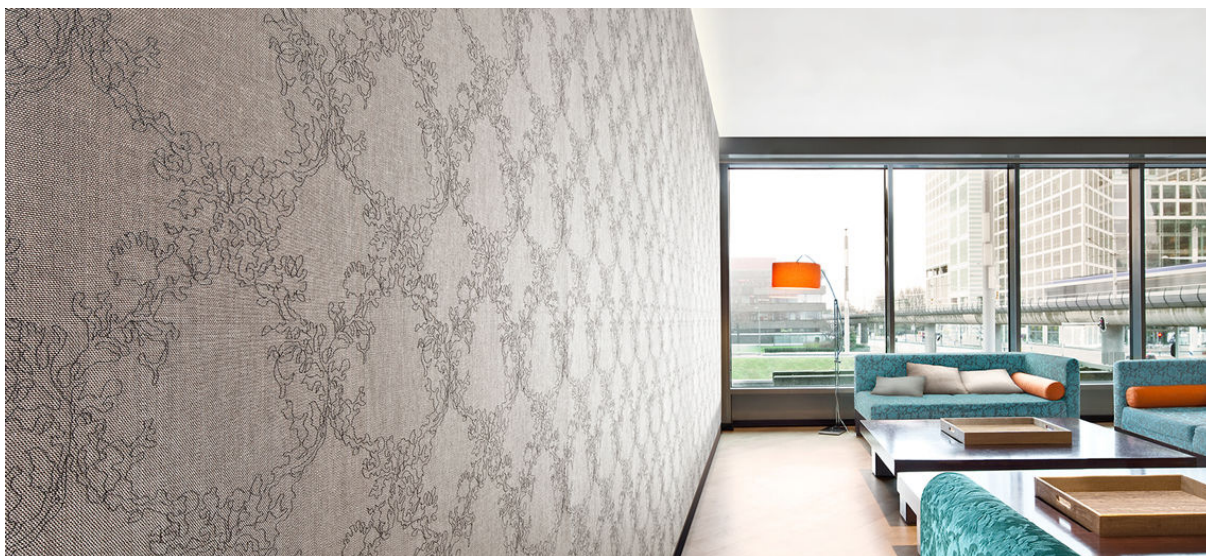


silhouette embroider

2531.01 - 2531.06



collectie

wallcovering

05

textile

xorel

omschrijving

klassieke ruit opgebouwd uit slingerende geborduurde draden

samenstelling

100% xorel (85% biobased PE, 15% PE)

breedte

± 132 cm, ± 52 inches

gewicht

± 286 gr/m², ± 12 oz/yd¹

rapport

hoogte: 24 cm, 9.5 inches

breedte: 24 cm, 9.5 inches

brandwerendheid

EN 13501, B s1 d2

ASTM E84, A

aanvullende informatie

cradle to cradle gold certified

Xorel is a registered trademark and license to distribute is granted by permission of Carnegie Fabrics Inc. US

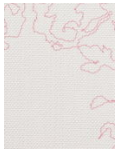


REACTION TO FIRE: EN 13501-1

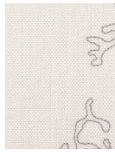


silhouette embroider

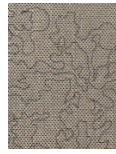
2531.01 - 2531.06



2531.01



2531.02



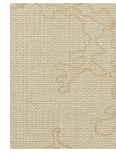
2531.03



2531.04



2531.05



2531.06