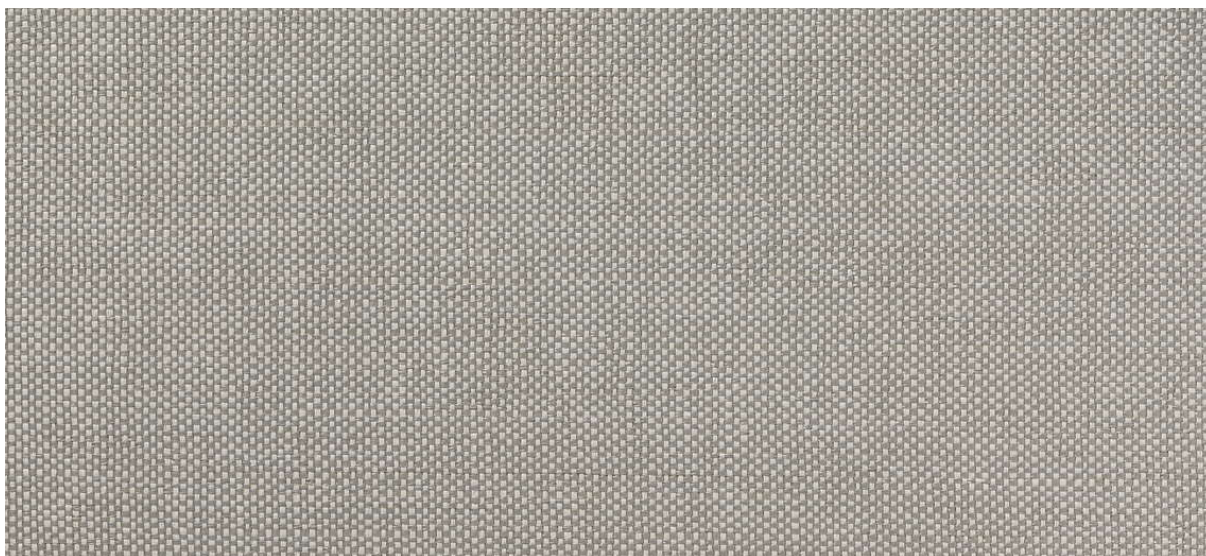


# strie

2532.01 - 2532.34



collectie

wallcovering

05

textile

xorel

omschrijving

**(semi-)uni platweefsel**

samenstelling

**100% xorel (85% biobased PE, 15% PE)**

breedte

**± 132 cm, ± 52 inches**

gewicht

**± 340 gr/m<sup>2</sup>, ± 15 oz/yd<sup>1</sup>**

brandwerendheid

**EN 13501, B s1 d2**

**ASTM E84, A**

aanvullende informatie

**cradle to cradle gold certified**

**Xorel is a registered trademark and license to distribute is granted by permission of Carnegie Fabrics Inc. US**



REACTION TO FIRE: EN 13501-1



# strie

2532.01 - 2532.34

---



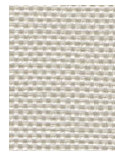
2532.32



2532.27



2532.11



2532.24



2532.26



2532.12



2532.21



2532.02



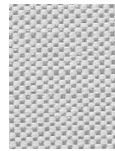
2532.06



2532.18



2532.15



2532.28



2532.31



2532.25



2532.07



2532.16



2532.05



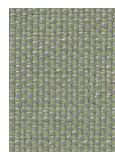
2532.09



2532.03



2532.13



2532.33



2532.29



2532.23



2532.19



2532.17



2532.04



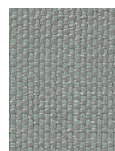
2532.10



2532.08



2532.14



2532.34



2532.30



2532.22



2532.20



2532.01