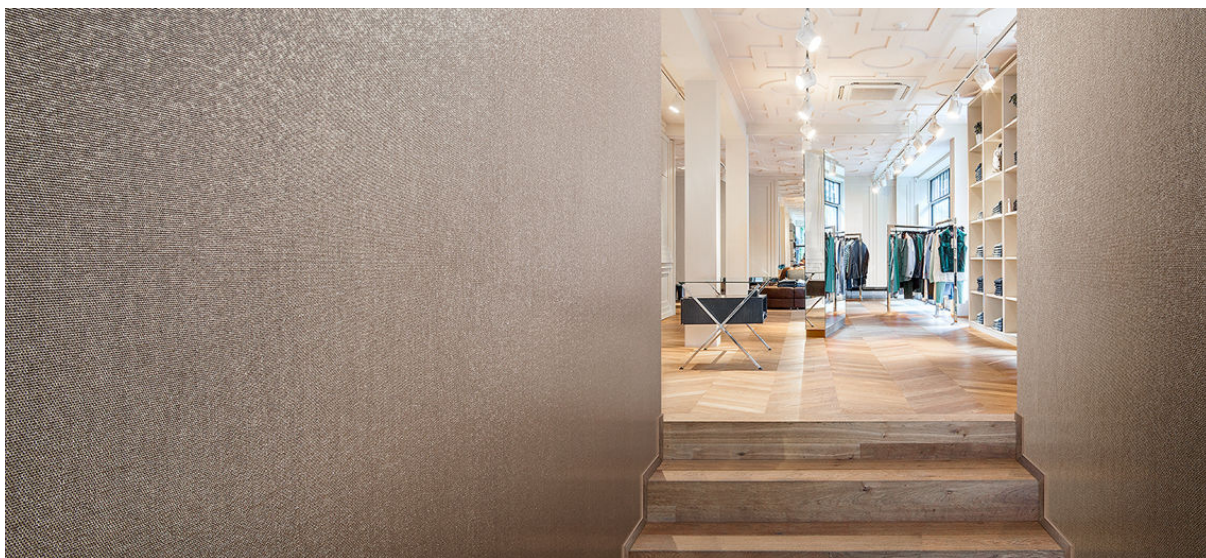


nexus

2534.01 - 2534.17



collectie

wallcovering

05

textile

xorel

omschrijving

(semi-)uni platweefsel met onregelmatige inslag

samenstelling

100% xorel (85% biobased PE, 15% PE)

breedte

± 132 cm, ± 52 inches

gewicht

± 420 gr/m², ± 18 oz/yd¹

brandwerendheid

EN 13501, B s1 d2

ASTM E84, A

aanvullende informatie

cradle to cradle gold certified

Xorel is a registered trademark and license to distribute is granted by permission of Carnegie Fabrics Inc. US

CE EN 15102:2007+A1:2011
12
1104/305-2011 (18-11-2015)
wallcovering

REACTION TO FIRE: EN 13501-1

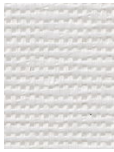


SCSCertified
INDOOR AIR QUALITY
Indoor Advantage | Building Materials
GOLD



nexus

2534.01 - 2534.17



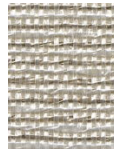
2534.01



2534.02



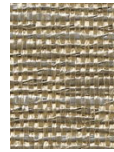
2534.03



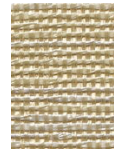
2534.08



2534.16



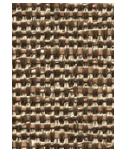
2534.14



2534.09



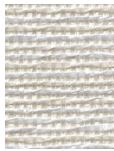
2534.06



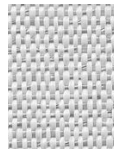
2534.17



2534.04



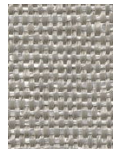
2534.05



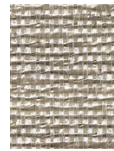
2534.07



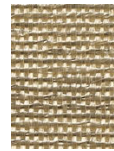
2534.10



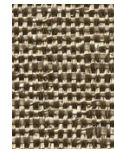
2534.13



2534.11



2534.12



2534.15