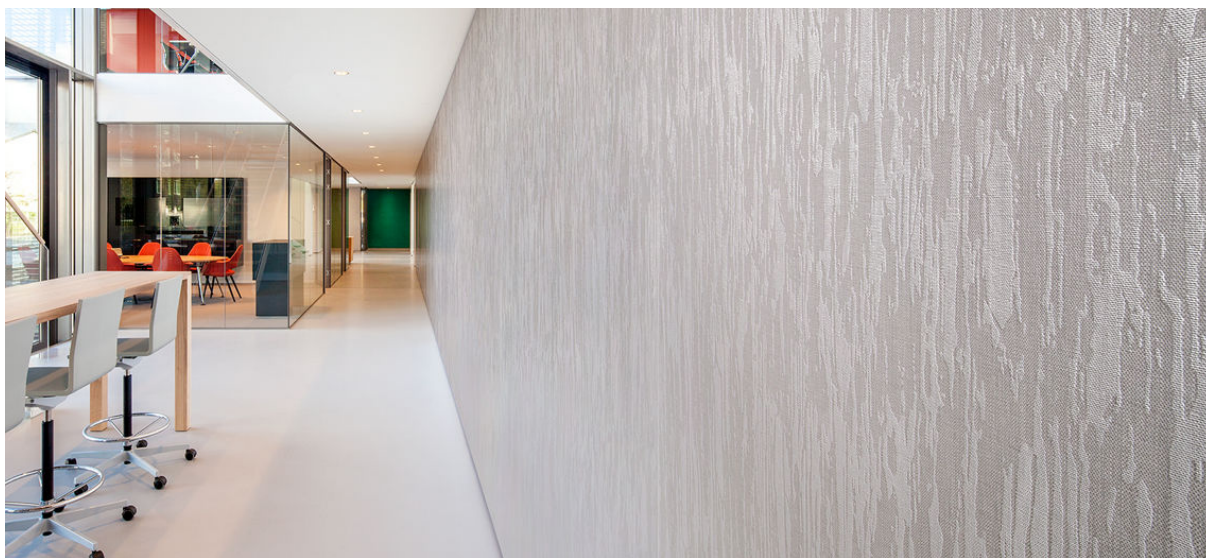


veneer emboss

2535.01 - 2535.08



collectie

wallcovering

05

textile

xorel

omschrijving

weefsel met schorstekening

samenstelling

100% xorel (85% biobased PE, 15% PE)

breedte

± 132 cm, ± 52 inches

gewicht

± 340 gr/m², ± 14 oz/yd¹

rapport

hoogte: 61 cm, 24 inches

breedte: 68.5 cm, 27 inches

brandwerendheid

EN 13501, B s1 d2

ASTM E84, A

aanvullende informatie

cradle to cradle gold certified

Xorel is a registered trademark and license to distribute is granted by permission of Carnegie Fabrics Inc. US



REACTION TO FIRE: EN 13501-1

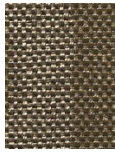


veneer emboss

2535.01 - 2535.08



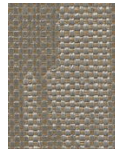
2535.07



2535.06



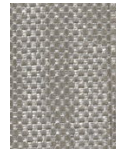
2535.04



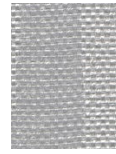
2535.08



2535.01



2535.02



2535.05



2535.03