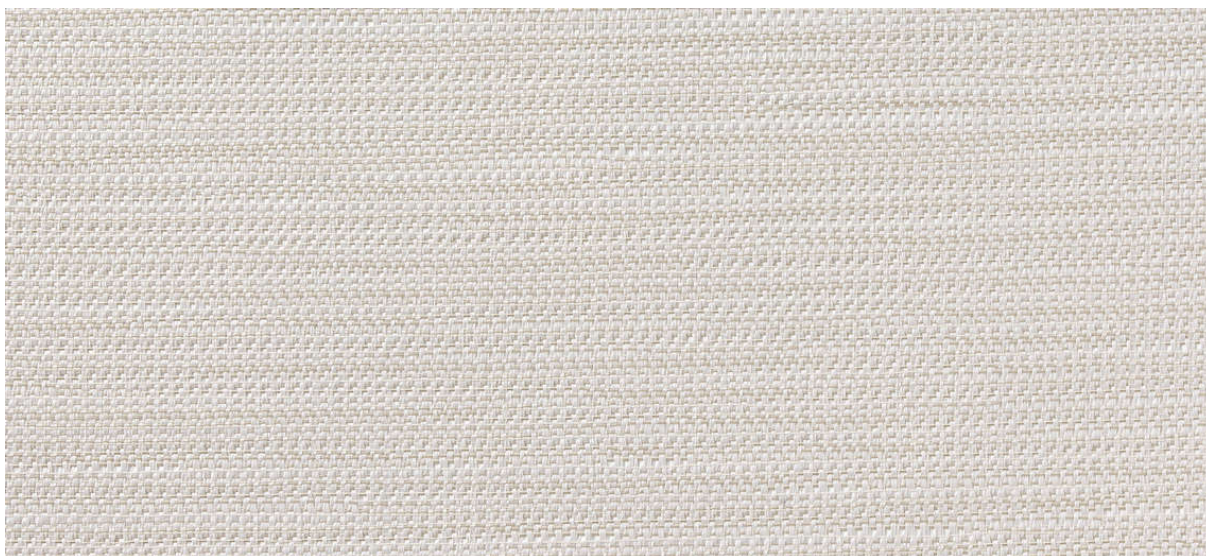


## flux

2539.01 - 2539.11



collectie

wallcovering

05

textile

xorel

omschrijving

semi-uni weefsel met vaag breedte-effect

samenstelling

100% ifr xorel

breedte

± 132 cm, ± 52 inches

gewicht

± 280 gr/m<sup>2</sup>, ± 12 oz/yd<sup>1</sup>

brandwerendheid

EN 13501, B s1 d0

ASTM E84, A

aanvullende informatie

cradle to cradle gold certified

**Xorel is a registered trademark and license to distribute is granted by permission of Carnegie Fabrics Inc. US**



REACTION TO FIRE: EN 13501-1



# flux

2539.01 - 2539.11

---



2539.01



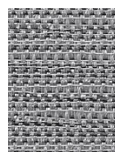
2539.03



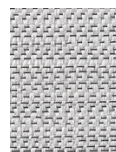
2539.05



2539.07



2539.06



2539.09



2539.11



2539.10



2539.08



2539.02



2539.04